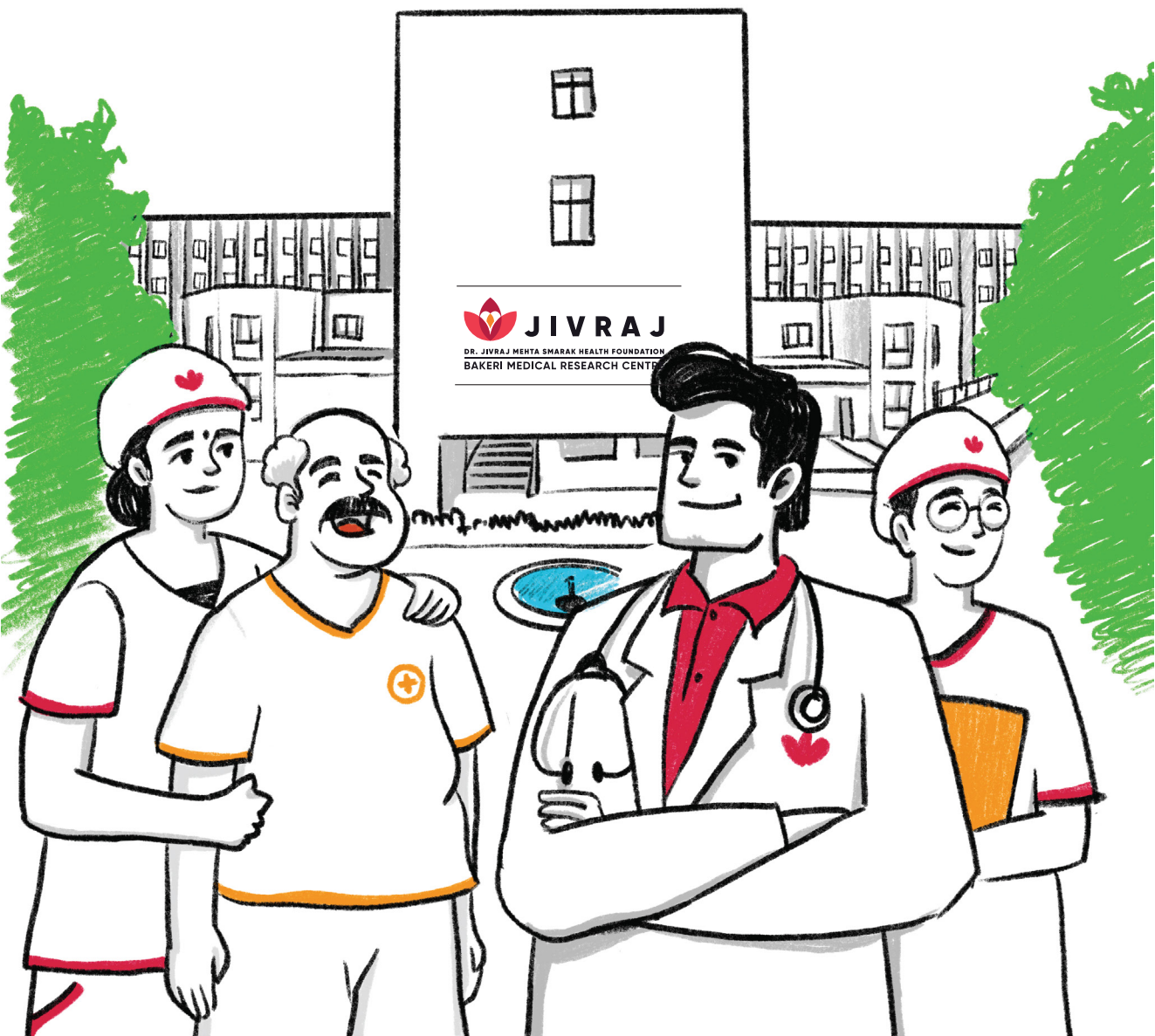


2024 THE YEAR JIVRAJ TOOK THE LEAP

40TH ANNUAL REPORT



2024

THE YEAR JIVRAJ TOOK THE LEAP

40TH ANNUAL REPORT
(FY: 2023-24)

Sr.No. Contents**Page No.**

01.	Introduction to 2024- The Year Jivraj Took The Leap	01
02.	The Story of Dr. Jivraj Mehta Smarak Health Foundation	15
03.	Awards & Accreditations	19
04.	Green Building Initiatives	23
05.	Digital Innovations	25
06.	Advancements at Bakeri Medical Research Centre	27
07.	The 2023-2024 Communication Journey	39
08.	Patient Feedback Summary	41
09.	Heartfelt Patient Testimonials	43
10.	A Five-Year Comparative Analysis of Medical Procedures & Services	45
11.	Achieving Excellence in Infection Control	49
12.	Annual Performance Review on KPIs	51
13.	Compassionate Care Initiatives	55
14.	Milestones & Achievements of 2023-24	57
15.	Process Improvement & HR Initiatives	59
16.	Enhancing Patient Care with Advanced Medical Equipments	65
17.	Heartfelt Gratitude to Our Generous Donors	67
18.	Looking Ahead	73
19.	Independent Auditor's Report	75

2707 Surgeries



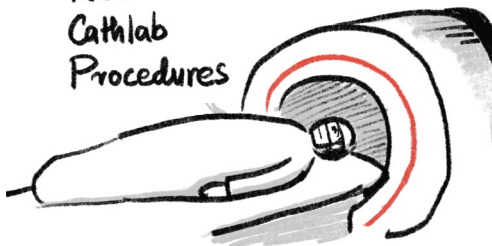
37661 Investigation
Procedures



6589 Dialysis



1285
Cathlab
Procedures



A Year of Healing and Hope:

Leaping Forward in Care and Compassion

As we reflect on the past year at Dr. Jivraj Mehta Smarak Health Foundation, we are filled with immense pride and gratitude. The year 2023-24 has been a testament to our unwavering commitment to providing high-quality, compassionate healthcare to the community we serve. This journey has been marked by remarkable achievements, milestones, and heartfelt stories of hope and healing.

Our mission to deliver accessible healthcare with a human touch has guided every step we take. From the tireless dedication of our medical professionals to the state-of-the-art facilities we continuously enhance, every aspect of our work is driven by a passion for excellence and a deep-seated belief that healthcare is a fundamental right for all.

This year alone, we have conducted over 2,707 surgeries, 37,661 Investigation procedures, and 6,589 dialysis. Our commitment to advancing medical science is evident in the 52 sponsored clinical trials and 137 in-house research projects we have conducted, contributing significantly to global medical knowledge and patient care.

We have extended our reach through health camps, blood donation drives, and partnerships with NGOs, touching the lives of thousands of individuals. This year, we recorded the highest occupancy of 160 patients in a day, a testament to the trust and confidence our community places in us.

We are honored to have received several prestigious awards, including the Best Multi-Specialty Hospital in Gujarat and the Excellence in Patient Care Award. Our accreditations, such as the renewal of

NABH and NABL certifications, reflect our commitment to maintaining the highest standards of healthcare.

Our journey forward is bright, with plans to achieve JCI Accreditation, transition to a paperless hospital, and develop a mobile application for enhanced patient interaction. We remain committed to investing in our people, our greatest asset, and fostering a culture of continuous learning and innovation.

As the next chapter begins, it is approached with a heart full of gratitude and a vision of a healthier, happier community. We are always there for the community, through every step of their healthcare journey, because at Dr. Jivraj Mehta Smarak Health Foundation, care is given like a family.

With deepest gratitude,
Jivraj Parivar

1Lac+

Operations

34+

Years

20Lac+

Patients Treated

350+

Doctors

205

Hospital Beds

Name of the Public Trust:

Dr. Jivraj Mehta Smarak Health Foundation

Registration Number:

F-951, 29-11-1983, Ahmedabad.

President:

Shri Anil Bakeri

Vice-President:

Shri Achal Bakeri

Managing Trustee:

Shri Devan V. Parikh

Hon. Secretaries:

Shri Ramakant Bhojnagarwala

Shri Kshitish Madanmohan

Shri Sanjay Choksi

Auditor:

Modi Jain & Co. Chartered Accountants
E-26, 5th Floor, Capital Commercial Centre,
Nr. UCO Bank, Ellisbridge, Ashram Road,
Ahmedabad-380 009

Bankers:

Axis Bank | Kotak Mahindra Bank
Union Bank of India | Yes Bank
State Bank of India | RBL Bank

Dr. Jivraj Mehta Smarak Health Foundation and Bakeri Medical Research Centre

Dr. Jivraj Mehta Smarak Health Foundation was established to honor the exceptional contributions of Dr. Jivraj Mehta, who made significant strides in medical education, administration, services, and research. Our foundation is dedicated to providing high-quality healthcare services that are accessible and affordable to everyone. Under one roof, we offer a wide range of multi-disciplinary medical and surgical care, ensuring comprehensive treatment and a holistic approach to patient well-being.

At the core of our mission lies a strong commitment to research. We strive to identify and deeply investigate pressing health issues, with the goal of fostering advancements that benefit society at large. Our research initiatives are driven by a passion for discovery and a desire to address the healthcare needs of our community effectively.

The Bakeri Medical Research Centre, as an integral part of our foundation, plays a pivotal role in this mission. It is equipped with state-of-the-art facilities and staffed by a team of dedicated professionals who are committed to pushing the boundaries of medical science. Through our research efforts, we aim to uncover new treatments, improve existing therapies, and ultimately enhance the quality of life for our patients.

Our foundation is more than just a healthcare provider; it is a beacon of hope and healing. We believe that healthcare should be delivered with empathy, respect, and a touch, ensuring that every patient feels cared for and valued. By integrating cutting-edge technology with compassionate care, we strive to create an environment where healing and innovation go hand in hand.

As we continue to build on Dr. Jivraj Mehta's legacy, we remain steadfast in our dedication to serving our community with excellence, compassion, and unwavering commitment. Together, we look forward to a future where healthcare is synonymous with trust, quality, and human touch.

Honoring Our Founder- Shri Ratu Adani

From a young age, Ratubhai Adani possessed the daring to dream and the commitment to transform those dreams into continuous reality. His heart beat in rhythm with the aspirations of his people, and his patriotic spirit propelled him deeply into India's freedom movement. Actively participating in pivotal events, Ratubhai Adani became renowned as a capable organizer and selfless worker.

He marched in the pioneering Dandi Satyagraha, spreading the torch of the freedom struggle to various regions of the country. Close associations with great leaders of his time allowed him to convert his admiration into valuable learning, which he later applied to uplift the people.

Ratubhai Adani was an institution builder who mastered the art of total resource management. He attracted funds, talent, professionals, and volunteers, all of whom eagerly supported his noble causes. His ability to inspire confidence and commitment was unmatched, drawing followers who offered their services out of faith in his vision.

His efforts focused on human development, whether it was providing relief from suffering, ensuring the dignity of earning, eradicating poverty, or empowering against exploitation. Today, his followers continue to carry forward his mission, serving humanity with the same dedication.

Ratubhai Adani remains a living presence in the grateful hearts of cured patients, thankful beneficiaries, and dedicated inheritors. His legacy endures as a shining symbol of human eternity, immortalized in the memories and hearts of his fellow men.

Shri Ratubhai Adani
April, 1914-September, 1997



“

Our Mission

To provide the finest
quality of healthcare
to all in need,
affordable to everyone,
with a human touch,
in a healing environment.

”



Shri Anil Bakeri
President

At Dr. Jivraj Mehta Hospital, our mission is simple yet profound: to provide compassionate, comprehensive, and cutting-edge care to every individual who walks through our doors. We believe that healthcare is a fundamental right, and we are dedicated to making it accessible to all.

As a multi-specialty hospital, we offer a wide range of medical services under one roof, encompassing cardiology, oncology, neurosciences, orthopedics, and more. Our team of highly trained and dedicated healthcare professionals is committed to delivering patient-centered care with empathy, kindness, and understanding.

Our state-of-the-art facilities, advanced technology, and innovative treatments enable us to tackle even the most complex medical challenges with confidence and precision. But it's not just about the technology – it's about the human touch, the comforting smile, and the reassuring words that make all the difference in a patient's journey to recovery.

At Dr. Jivraj Mehta Hospital, we are always there for you – through every step of your healthcare journey, through every triumph and every challenge. We are your trusted partners in health, your advocates, and your friends. Our promise to you is simple: we will care for you like family, because that's what you deserve. We are always there for you.



Shri Achal Bakeri
Vice President

In the 35th year since the Dr. Jivraj Mehta Smarak Health Foundation was formed, we rededicate the all-new Jivraj Mehta Hospital and Bakeri Medical Research Centre to the people of Gujarat.

At JIVRAJ, our mission is to provide compassionate, high-quality, and accessible healthcare services to all. As advocates for health equity, we aim to address healthcare disparities and reduce barriers to care, ensuring that everyone receives the medical attention they need, regardless of their ability to pay.

Our dedication to serving society with integrity and transparency guides every decision we make. As a non-profit institution, it is only with the support of generous donors that we can continuously improve our facilities and expand our services, with the aspiration to make JIVRAJ one of the finest trust-run healthcare institutions in India.



Shri Devan Parikh
Managing Trustee

Success is a process, not a destination. As we strive in earnest to achieve higher standards, we are both happy and relieved to receive encouraging results and feedback throughout our journey.

The New Look "Jivraj" was introduced to the trustees and prominent citizens on December 10, 2023. We received a very warm response, which led to donations of Rs. 13,60,87,052/- immediately thereafter. The number of OPD, IPD, surgeries, and patients treated has seen a substantial surge. Our yearly total revenue stands at Rs. 69,59,43,719/-, an increase of 18.30%. This has greatly contributed to the fiscal consolidation of the institute, which faced significant financial backlogs, especially due to the COVID years.

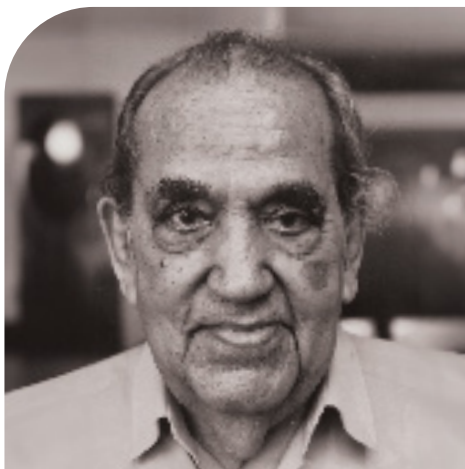
Our journey's objective is to provide honest, affordable, and outstanding medical services to the needy. For them, "less" mustn't mean "a compromise."

As Jivraj gains strength and reputation, it will only help us to provide even better services to them.

We seek your good wishes, help, and assistance in every way to help us take Jivraj to new heights.

I express my deepest gratitude to those kind hearts who have opened up their purses for us, and to our trustees for their continuous support and guidance. My Sincere thanks to the doctors, nurses & staff who are the very backbone of 'Jivraj'.

In Memory of Shri Vipin S Parikh



It is with profound sadness that we acknowledge the passing of Shri Vipin S Parikh. His remarkable contributions to Jivraj Hospital, serving as Managing Trustee from its inception until 2020, have left an indelible mark on our institution and community.

Shri Parikh's visionary leadership and unwavering dedication were instrumental in elevating the quality of care and services we provide. His tireless efforts and compassionate approach have profoundly impacted the lives of countless patients and their families. His legacy of excellence, kindness, and commitment to healthcare will continue to inspire and guide us in our mission.

As we reflect on the past year, we honor Shri Parikh's memory and his invaluable contributions. His spirit will forever remain a part of Jivraj Hospital, motivating us to uphold the standards he set and continue the work he was so passionate about.

With heartfelt sympathy,
Jivraj Parivar

Board of Trustees

Name	Name	Name
Shri Anil Bakeri	Shri Nrupesh C. Shah	Shri Manthan B. Kshatriya
Shri Achal Bakeri	Shri Bipin S. Bhagat	Shri Krishankumar Maheshwari
Shri Devan Parikh	Shri Saurabh Shodhan	Shri Bhadresh V. Mehta
Shri Ramakant Bhojnagarwala	Shri Shailesh P. Mehta	Shri Pravinchandra A. Shah
Shri Kshitish Madanmohan	Shri Kanti M. Patel	Shri Dhaval Kshatriya
Shri Sanjay Choksi	Shri Paresh K. Parikh	Shri Niraj Hutheesing
Smt. Pushpaben N. Shah	Shri Pavani A. Agrawal	Shri Hanskumar R. Agarwal
Shri Navnit Choksi	Dr. Ajay J. Patel	Shri Kush H. Agarwal
Shri Vipin S. Parikh	Shri Nikhil J. Shah	
Shri Vatsal Parikh	Shri Asit N. Somani	
Shri Amit A. Shah	Dr. Shanaya Patel	
Dr. Dhiraj Mehta	Shri Lalit P. Bakeri	
Dr. Pranav Nanavati	Shri Taral Bakeri	
Shri Ajay Choksi	Shri Ramesh M. Patel	
Shri Pradip Kamdar	Shri Shubhang Madanmohan	
Shri Panna F. Shah	Shri Dhruvil B. Patel	
Shri Sanjiv Mahendralal	Shri Jaykrishna S. Agarwal	
Shri Rati Kamdar	Smt. Priti A. Choksi	
Shri Bharat Kshtriya	Shri Vijay R. Joshi	
Shri Hetal B. Parikh	Shri Sunil Mehta	
Shri Jagat V. Patel	Shri Nikhil B. Kshatriya	
Shri Firdos Cambatta	Shri Rajan Vasa	
Shri Dipak G. Patel	Shri Ajit C. Mehta	
Shri Bimal D. Parikh	Shri Pankajkumar J. Dalal	
Shri Prashant Kinariwalal	Dr. Milan P. Dalal	
Shri Ashish S. Shah	Shri Ganpatraj L. Chowdhary	
Shri Pavan Bakeri	Smt. Rupa A. Bakeri	

Office Bearers



Mr. Anil Bakeri
President



Mr. Achal Bakeri
Vice President



Mr. Devan Parikh
Managing Trustee



Mr. Ramakant Bhojnagarwala
Hon. Secretary



Shri Kshitish Madanmohan
Hon. Secretary



Mr. Sanjay Chokshi
Hon. Secretary

Executive Committee

No.	Name	No.	Name
1	Shri Anil Bakeri	6	Mr. Ramakant Bhojnagarwala
2	Shri Vipin Shantilal Parikh	7	Shri Kshitish Madanmohan
3	Shri Navnit Choksi	8	Shri Sanjay Choksi
4	Shri Achal Bakeri	9	Smt. Pushpaben N. Shah
5	Shri Devan Parikh		

Ethics Committee

No.	Name	Qualification with specialization	Designation
1	Dr. Sunita Goswami	M.Pharm, PhD(Pharmacology)	Chairperson
2	Dr. Chirag Vaghela	B.A.M.S	Member Secretary
3	Dr. R.K Dikshit	MBBS, MD(Pharmacology)	Basic Medical Scientist
4	Dr. Prabhudas Patel	M.Sc, Ph.D.	Scientific Member
5	Dr. Shubha Desai	MBBS, MD(General Medicine)	Clinician
6	Dr. Panna Shah	MBBS, MD(Dermatology)	Clinician
7	Mr. Sunil Parikh	M.com,LLB	Legal Expert
8	Dr. Harsh Joshi	MBBS, MD(Pharmacology)	Basic Medical Scientist
9	Mrs. Parul Parikh	B.com	Social Scientist
10	Mr. Nilang Vora	B.A	Lay Person

Governing Council

No.	Name	Designation
1	Mayor	Ahmedabad Municipal Corporation
2	Commissioner	Ahmedabad Municipal Corporation
3	Chairman	G.M.D.C.
4	Managing Director	G.M.D.C.
5	Shri Anil Bakeri	Representative of Bakeri Urban Development Pvt. Ltd.
6	Shri Achal Anil Bakeri	Representative of Bakeri Urban Development Pvt. Ltd.
7	Dr. D. J. Parikh	Scientist
8	Shri Kshitish Madanmohan	Trustee
9	Shri Devan Vipin Parikh	Trustee
10	CEO & Chief of Medical Services	Dr. J.M.S.H.F., B.M.R.C.

Scientific Advisory Committee

No.	Name	Designation
1	Dr. R.K. Dikshit	Chairman
2	Dr. Prabhudas Patel	Member Secretary
3	Dr. Manesh Agarwal	Member
4	Dr. Paresb Parikh	Member
5	Dr. Shubha Desai	Member
6	Dr. Premal Thakor	Member
7	Dr. Jayesh Sheth	Member
8	Dr. Tarak Shah	Member
9	Dr. Varsha Patel	Member
10	Dr. Rohit Shah	Member
11	Dr. Devang Parikh	Member
12	Dr. Dhiraj Mehta	Member
13	Dr. Atul Parikh	Member



A Journey of Healing:

The Story of Dr. Jivraj Mehta Smarak Health Foundation

In the early 1980s, a vision was born. In 1981, Dr. Jivraj Mehta Smarak Health Foundation was established to honor the remarkable contributions of Dr. Jivraj Mehta, a pioneer in the field of medical education, administration, and research. This foundation laid its first stone, setting the stage for a journey of compassion, innovation, and excellence in healthcare.

1981-1990

The Early Years: Laying the Foundation

- The foundation's journey began with the establishment of Bakeri Medical Research Centre in 1989. This marked the beginning of a relentless pursuit to provide top-notch healthcare services. By 1990, the foundation expanded and renovated its Intensive Coronary Care Unit (ICCU) and Intensive Care Unit (ICU), reflecting its commitment to saving lives.

1991-2000

Building a Comprehensive Healthcare System

- In 1991, the launch of the I.C.C.U. and Ambulance Service showcased the foundation's dedication to rapid and effective emergency care. The early 1990s also saw the inauguration of the Diabetic Clinic in 1993 and the renaming of the facility to Bakeri Medical Research Centre in 1994, enhancing its identity and services. The mid-1990s brought further expansion with the introduction of Eye, Dental, Casualty, and Physiotherapy Services in 1996.

2001-2010

Entering a New Millennium

- As the new millennium dawned, the foundation continued its journey of innovation and expansion. The year 2000 saw the introduction of Laparoscopic surgery and the expansion of Gastro-intestinal endoscopic facilities. By 2001, the foundation had introduced a joint replacement surgery package and initiated a Nursing Training program, further cementing its reputation as a leader in healthcare education and services.

In 2002, the foundation took a significant leap by commissioning open heart surgery, followed by the inauguration of renovated C.H.C. Department and Pediatric Floor in 2003. The mid-2000s were marked by infrastructure upgradation, the addition of an Ophthalmic Operation Theatre, and the launch of a Tele-Medicine Center in 2007.

2011-2020

Strengthening the Foundation

- The 2010s were a period of consolidation and growth. In 2013, the foundation inaugurated its Cathlab & Cardiac Surgery Department, enhancing its cardiac care capabilities. By 2014, it had gained recognition from the ISCCM and initiated diploma and certificate courses to foster medical education.

The years 2016-17 were transformative, with the inclusion of a Component Blood Bank, implementation of ERP software, and the development of a comprehensive fire safety system and hospital website. The foundation continued to grow, with significant developments in the CSSD and Operation Theaters in 2018-19.

2021-2023

Adapting to New Challenges

- The onset of the COVID-19 pandemic in 2020 presented unprecedented challenges. The foundation rose to the occasion, adding high-end ventilators and successfully treating over 1000 COVID patients. The implementation of a sprinkler system for enhanced safety highlighted its commitment to patient care.

In 2021-22, the foundation introduced a liquid Oxygen tank and upgraded the Central Medical Gas line, ensuring the availability of critical resources. The years 2022-23 witnessed comprehensive upgrades to hospital infrastructure and equipment, reflecting a relentless pursuit of excellence.

2024 and Beyond

Continuing the Legacy

- As we celebrate 39 years of healing lives in 2024, the journey of Dr. Jivraj Mehta Smarak Health Foundation continues. With each milestone, we honor our past, embrace the present, and look forward to a future where compassionate, high-quality healthcare is accessible to all. Our story is one of dedication, innovation, and unwavering commitment to the well-being of our community. Together, we will continue to write new chapters in this inspiring tale of healing and hope.



In Search of Excellence:

Awards and Accreditations that Define Our Commitment to Quality Healthcare

At Dr. Jivraj Mehta Smarak Health Foundation, our relentless pursuit of healthcare excellence has garnered us numerous prestigious awards and recognitions. These accolades not only

honor our commitment to delivering superior healthcare services but also inspire us to continuously elevate our standards.



Gujarat Gaurav Award

Presented by the Gujarat Journalist Union



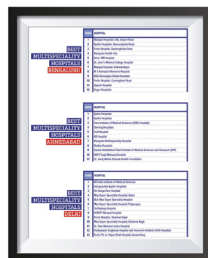
Certificate of Excellence

Awarded by NAI-North American Indian



Gujarat Gaurav Ratna Award

Given by the Indian Council of Social Welfare



The Week Magazine

Recognised Jivraj Mehta Hospital among the best hospitals of Ahmedabad

Accreditations

Our commitment to maintaining the highest standards of healthcare is reflected in the accreditations we have achieved. These accreditations validate our adherence to rigorous quality and safety standards, ensuring that our patients receive the best possible care. Our notable accreditations include:



NABH
For Hospital



NABH
For Nursing



NABH
For Emergency



NABH
For Blood Banks



NABL
For Laboratory



NABH
For Ethics Committee

These awards and accreditations are a testament to the dedication, hard work, and unwavering commitment of our entire team at Dr. Jivraj Mehta Smarak Health Foundation. They motivate us to continue our journey of excellence, compassion, and innovation in healthcare. As we move forward, we remain committed to our mission of providing the finest quality healthcare to all, ensuring that every patient receives the care and attention they deserve.



JIVRAJ

DR. JIVRAJ MEHTA SMARAK HEALTH FOUNDATION
BAKERI MEDICAL RESEARCH CENTRE

24 x 7 EMERGENCY DEPARTMENT
২৪ ঘণ্টা সার্বদায় বিভাগ





Green Building Initiatives:

Leading the Way in Environmental, Social, and Governance (ESG) Efforts

At Dr. Jivraj Mehta Smarak Health Foundation, we are dedicated to implementing sustainable practices that promote environmental stewardship, social responsibility, and

robust governance. Our green building initiatives are a testament to this commitment, creating a healing environment while minimizing our ecological footprint.

1. Natural Light and Healing Environment:

Our hospital building is designed to ensure that every patient cot receives ample natural sunlight through large windows. This not only creates a positive effect on patients, enhancing their mood and aiding in faster recovery but also reduces the need for artificial lighting during the day.

2. Energy Efficiency:

We have upgraded all existing lights to high flux LED lights, which consume significantly less energy while providing optimal illumination.

3. Sustainable Design:

The hospital building is designed in a "+" (Plus) symbol layout, which facilitates cross ventilation. This design helps reduce hospital acquired infections by ensuring better air circulation thereby minimizing the use of air conditioners.

4. Water Management:

An STP (Sewage Treatment Plant) has been installed, and the treated water is utilized for maintaining our garden areas, contributing to water conservation we have installed a percolation well to increase the underground water level, ensuring sustainable water management.

5. Noise Pollution Reduction:

Our hospital is designated as a No Horn zone, which significantly reduces noise pollution, creating a peaceful environment for patients and staff.

6. Pollution-Free Technology:

Our transformer has been upgraded to a dry type, which is oil-free and pollution-free, reducing the risk of environmental contamination.

7. Green Spaces:

Over 40% of our hospital grounds are developed and maintained as green garden areas, providing a serene environment and enhancing the overall well-being of patients and staff.

8. Air Quality Control:

HEPA and antibacterial filters are installed in critical areas to reduce airborne infections, ensuring clean and safe air throughout the hospital.

9. Non-Toxic Materials:

The entire hospital is painted with non-toxic colors. We also use non-toxic chemicals and reagents in our daily cleaning activities to ensure a safe and healthy environment.

10. Plastic Reduction:

We have replaced plastic bags with paper bags in our Pharmacy and Health Check-up departments, reducing plastic waste and promoting eco-friendly alternatives.

11. Biomedical Waste Management:

We adhere to 100% compliance with GPCB (Gujarat Pollution Control Board) guidelines for handling and managing biomedical waste, ensuring safe and responsible waste disposal practices.

12. Diversity and Inclusion:

We adhere to 100% compliance with GPCB (Gujarat Pollution Control Board) guidelines for handling and managing biomedical waste, ensuring safe and responsible waste disposal practices. In addition to our environmental efforts, we are committed to fostering a diverse and inclusive workplace. Our staff composition reflects our dedication to diversity.



Embracing Digital Innovations for a Sustainable Future:

Digital Innovations

At Jivraj Mehta Hospital, we are committed to leveraging digital technology to enhance healthcare services, streamline operations, and

create a more sustainable environment. Our digital initiatives are designed to provide a seamless, efficient, and patient-centric experience.

Medical MIS - Monthly:

Implemented a monthly Medical Management Information System (MIS) to streamline data collection and reporting, enabling timely and accurate decision-making.

Digital Patient Feedback System:

We have introduced a digital system to gather real-time patient feedback, allowing us to quickly address concerns and improve the overall patient experience.

HR Digitization:

We have digitized the complete employee lifecycle using Adrenalin, from manpower requisition to relieving, enhancing efficiency and reducing paperwork.

ABDM Portal Registration:

We have facilitated the management of digital health records through the ABDM portal, ensuring secure and efficient access to patient information.

Med-learn App:

Launched to provide digital training for our staff, this app ensures continuous learning and professional development in an accessible and user-friendly format.

Adrenaline App:

Introduced for comprehensive digital human resource management, this app covers the entire employee lifecycle, from manpower requisition to relieving.

Future Plans for Digital Upgradation

Looking ahead, our future plans focus on further advancing our digital practices to enhance efficiency, reduce environmental impact, and improve patient care.

Paperless Hospital:

We aim to transition to a fully paperless hospital, streamlining processes and minimizing our environmental footprint. Our goal is to achieve a completely paperless departments, eliminating the need for physical documents and significantly reducing paper waste.

NABH Digital Initiatives:

We will continue to advance our NABH digital initiatives to ensure compliance and

improve care quality through innovative digital solutions.

Enhanced Digital Patient Interaction:

We plan to improve digital interaction channels for patients, making it easier for them to access information, communicate with healthcare providers, and manage their health effectively.

By embracing these digital innovations and future plans, Jivraj Mehta Hospital is dedicated to creating a more efficient, sustainable, and patient-friendly healthcare environment.



Pioneering Medical Research:

Advancements at Bakeri Medical Research Centre

Since its inception in 1992, the Research Department at Dr. Jivraj Mehta Smarak Health Foundation (JMSHF) has been a beacon of innovation and progress in the

field of medical science. Our commitment to research is driven by a passion for discovery and a dedication to improving healthcare outcomes for our community.

Exploring Disease Interventions

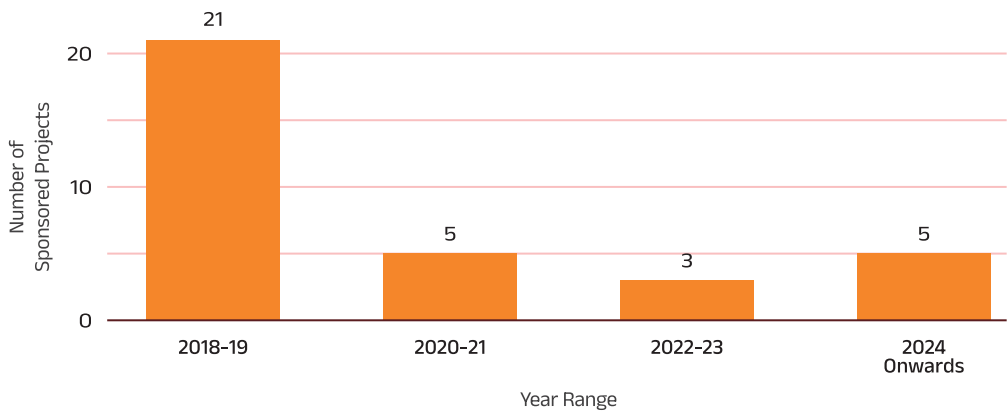
Over the years, our research team has actively explored various facets of disease interventions, aiming to implement effective management and treatment strategies. The department's vision is to investigate healthcare challenges and provide long-term solutions that ensure the well-being of our patients. This commitment has earned us numerous

accolades and accreditations from government regulatory bodies. The Research Department also trains B Pharm, Pharm D, and MSc students, with a total of 11 trainees benefiting from our programs.

1. Sponsored Projects

Our collaboration with external agencies, including pharmaceutical companies, allows us to conduct sponsored clinical trials. These trials, conducted under controlled and monitored environments,

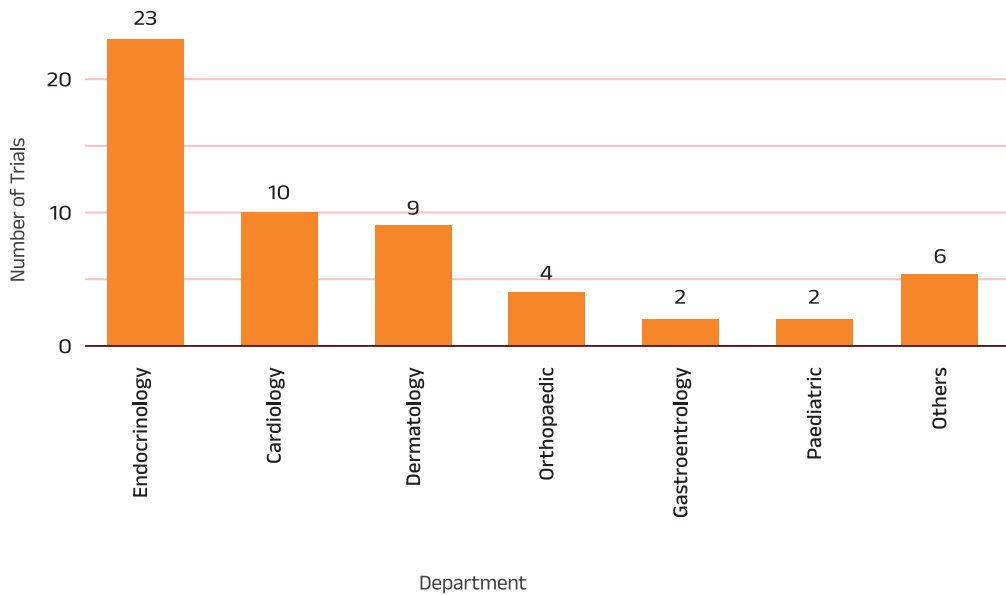
test new-age drugs and provide participants with access to modern medicine and round-the-clock care. In past 5 years, we have conducted and concluded 34 sponsored clinical trials.



1.1 Research Highlights

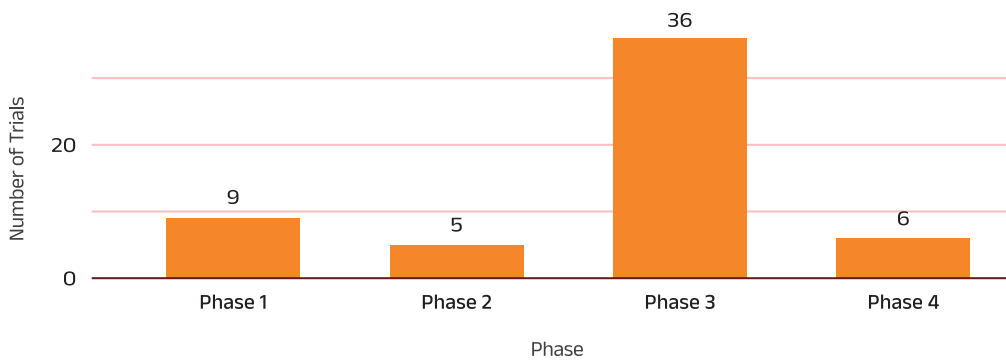
Departmental Focus:

Endocrinology has the highest recorded trials, followed by Cardiology and recently, Dermatology.



1.2 Trial Phases:

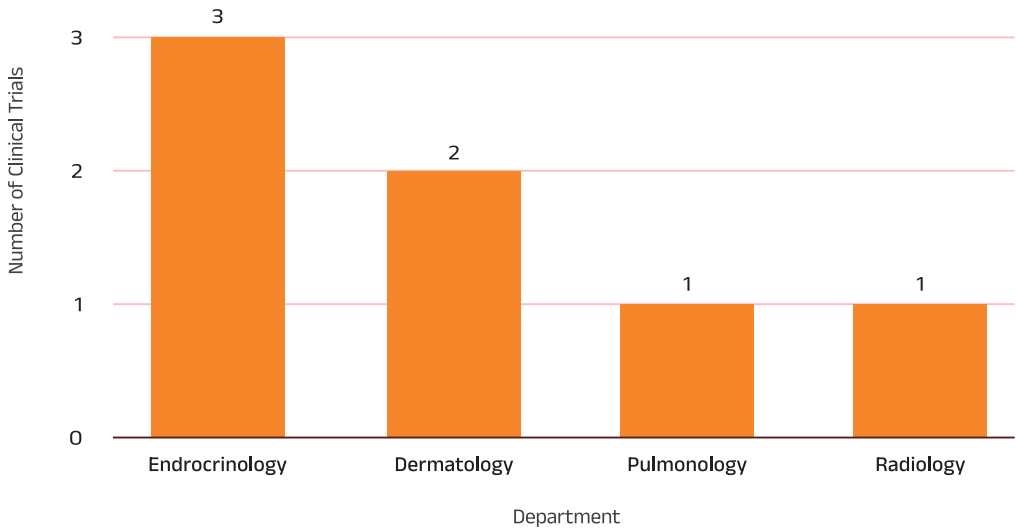
Phase 3 trials are the most common, evaluating drug efficacy in larger populations.



1.3 Current Year Clinical Trials Achievements

This year, the Research Department has initiated 7 clinical trials and is managing 18 ongoing in-house projects. We are currently negotiating for 3 new clinical trials, and the

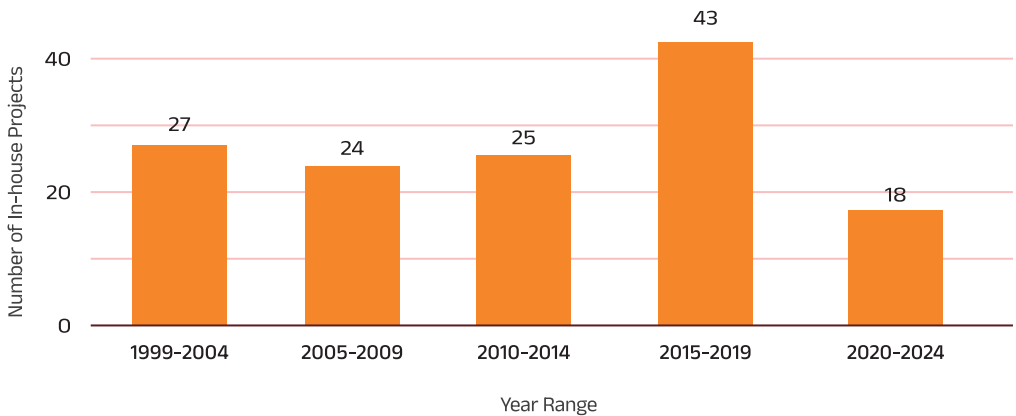
Scientific Advisory Committee (SAC) has approved 7 in-house projects for the year 2024-2025.



2. In-House Projects

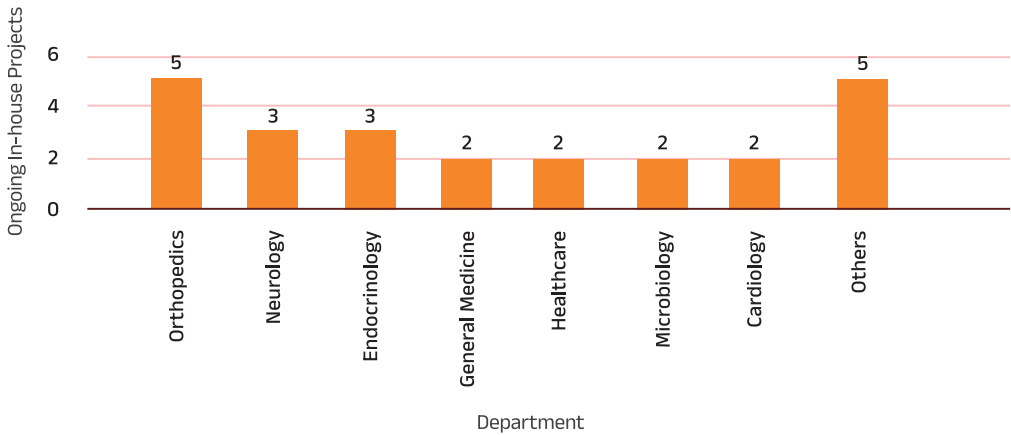
We encourage our doctors to initiate and conduct in-house research projects, which are funded based on the merit of the proposed study. These projects culminate in scientific publications, advancing the

credibility of Jivraj Mehta Hospital doctors and improving our understanding and treatment of patients. In past 25 years, we have conducted 137 in-house projects.



2.1 Project Areas:

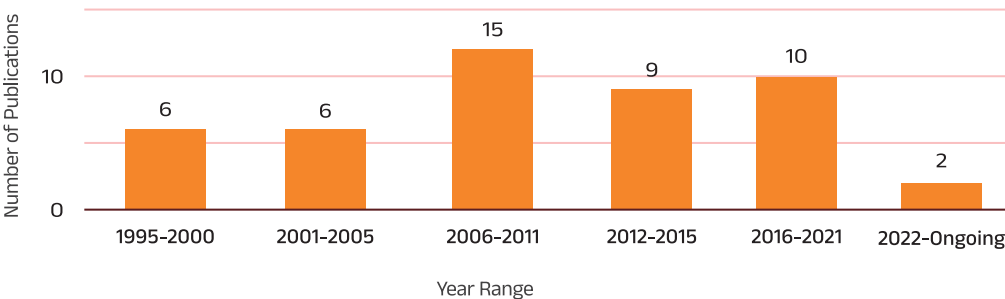
We have seen the highest projects in Orthopedics, Neurology, Endocrinology, General medicine, and Healthcare.



3. Publications

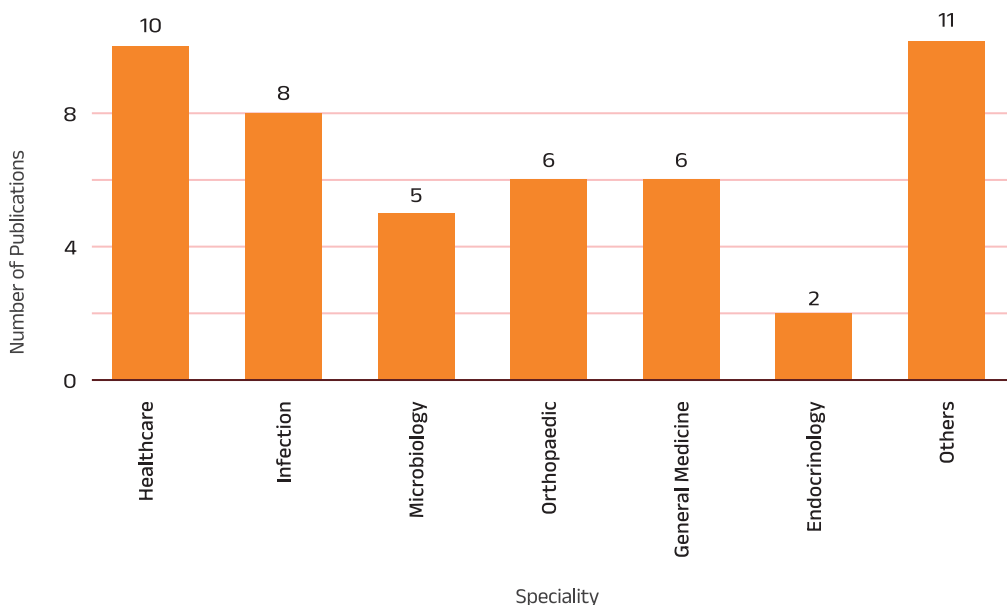
Scientific publications are crucial for the evolution of modern science, facilitating communication between experts

worldwide. Jivraj Mehta Hospital has published 48 scientific papers, contributing significantly to global medical knowledge.



3.1 Publication Focus:

Our focus is not only on understanding disease trends but also on exploring new avenues for diagnosis and treatment. We maintain high publication rates in healthcare, infections, general medicine, and orthopedics.



Committees at Jivraj Mehta Hospital

- IEC-BHR
- IEC (CDSCO)
- Scientific Advisory Committee (SAC)

These committees, recognized by various government bodies, regularly monitor the activities of the Research Department to maintain ethical integrity and ensure patient welfare.

The dedication and hard work of our research team drive our continuous efforts to push the boundaries of medical science. By fostering a culture of innovation and excellence, we are committed to making meaningful contributions to healthcare and improving the lives of our patients.

Efficacy and Safety of Tenoeligliptin as Add-On Therapy in Indian Type 2 Diabetes Mellitus Patients with Dyslipidemia

Objective

To evaluate the efficacy and safety of Tenoeligliptin as an add-on therapy in Type 2 Diabetes Mellitus (T2DM) patients with dyslipidemia.

Methodology

A total of 120 patients were assigned to receive either conventional therapy alone or Tenoeligliptin added to conventional therapy for 24 weeks.

Glycemic Control Results

Tenoeligliptin significantly improved glycemic parameters, reducing HbA1c by 0.9%, fasting blood glucose (FBG) by 32.63

mg/dL, and postprandial blood glucose (PPBG) by 36.61 mg/dL compared to conventional therapy alone.

Lipid Profile Results

The Tenoeligliptin group showed a decrease in total cholesterol by 52.10 mg/dL, triglycerides by 39.48 mg/dL, and LDL by 34.06 mg/dL.

Safety

Tenoeligliptin was well tolerated, with fewer adverse events (8.33%) compared to the control group (21.66%).

Minimally Invasive Transforaminal Lumbar Interbody Fusion: Results of 23 Consecutive Cases

Objective

To evaluate the clinicoradiological outcomes of minimally invasive transforaminal lumbar interbody fusion (TLIF) in patients with degenerative spinal conditions.

Methodology

Prospective study on 23 patients (17 females, 6 males), aged 55, 45 years on average, undergoing MIS-TLIF over the span of 15 months.

Surgical Details

L4-L5 was the most common level operated on (14 patients).

The average operative time was that of 3 hours.

Results

Clinical outcomes showed 14 patients with excellent results, 5 with good results, 2 with fair results, and 2 with poor results. Radiological union was achieved in 22 out of 23 patients, indicating successful bone healing in most cases.

Complications

Out of 23 patients, 3 experienced persistent back pain, and 4 had residual numbness or radiculopathy. The procedure showed benefits like less postoperative pain, reduced blood loss, shorter hospital stays, and quicker recovery times compared to open procedures.

Fracture of Trochanteric Stabilization Plate Used for Fixation of Trochanteric Hip Fracture: Case Report of a Rare Complication.

Objective

To analyze a rare complication involving a trochanteric stabilization plate (TSP) fracture used with a dynamic hip screw (DHS) in treating an unstable intertrochanteric hip fracture.

Case Description

A 78-year-old woman, initially with excellent surgical outcomes, developed pain and clicking in her greater trochanter region seven years post-surgery, without any trauma.

Diagnosis

The complication was identified as a fracture in the stainless steel TSP, caused

by galvanic corrosion between the titanium antirotation screw and the stainless steel plate.

Treatment

The removal of the fractured piece of the plate resulted in the complete resolution of symptoms.

Significance

This case highlights the effectiveness of TSP in treating unstable fractures and raises concerns about using implants of different metallic compositions due to potential galvanic corrosion.

Effectiveness and safety assessment of beta-blockers, calcium channel blockers, and angiotensin receptor blockers in hypertensive patients: A prospective study

Objective

The study aimed to evaluate the effectiveness and safety of beta-blockers, calcium channel blockers, and angiotensin receptor blockers (ARBs) in hypertensive patients.

Methodology

This prospective study included 180 hypertensive patients (mean age 59.19 years; 80.68% male). They were divided into three groups: beta-blocker (metoprolol), calcium channel blocker (amlodipine), and ARB (telmisartan). Blood pressure data, including systolic blood pressure (SBP) and diastolic blood pressure (DBP), were collected over 12 weeks. The study was conducted at a multi-specialty hospital in Ahmedabad, and safety and efficacy were monitored and compared across the groups.

Results

All three drug groups effectively reduced SBP and DBP. The reduction in SBP was not significantly different among the groups ($P=0.4819$), but calcium channel blockers showed slightly superior efficacy compared to beta-blockers and ARBs.

Adverse Reactions

Adverse reactions were minimal and comparable across all three medication groups. Common side effects included cough, dry mouth, fatigue, nausea, and skin rashes for beta-blockers; sedation, vomiting, stomach pain, and leg swelling for calcium channel blockers; and cough, headache, nausea, and skin rashes for ARBs. No severe adverse events were reported during the study period.

Conclusion

The study confirmed the efficacy of calcium channel blockers, beta-blockers, and ARBs in managing hypertension. Calcium channel blockers were slightly more effective, but all three medications were safe and well-tolerated.

Routing chemoprophylaxis for deep Venous thrombosis in indian patients : is it really justified?

Objective

To evaluate the necessity of routine chemoprophylaxis for deep venous thrombosis (DVT) in Indian patients undergoing total knee and hip arthroplasty and lower limb fracture surgeries.

Methodology

A prospective study involving 125 patients over three years. Duplex ultrasonography was used to detect DVT between the seventh and 14th postoperative days. No mechanical or chemical DVT prophylaxis was used.

Surgical Details

L4-L5 was the most common level operated on (14 patients). The average operative time was that of 3 hours.

Results

DVT was detected in 9 patients (7.2%), with 3 having proximal DVT and 6 having distal DVT.

The majority resolved without treatment, and no cases of pulmonary embolism were observed.

Conclusions

The incidence of DVT in Indian patients is lower than reported in Western literature. Routine chemoprophylaxis may not be necessary for all patients, but high-risk individuals should be closely monitored.

Recommendations

Routine chemoprophylaxis for DVT in Indian patients may not be necessary due to the lower incidence rate. Targeted prophylaxis for high-risk patients and close monitoring is recommended. Larger studies are needed to confirm these findings.

Effect of Diuretics on Sodium, Potassium, and Chloride Levels: A Cross-Sectional Study

Objective

To investigate the impact of diuretics on sodium, potassium, and chloride levels in hypertensive patients.

Methodology

A cross-sectional study involving 177 hypertensive patients. Participants were divided into those taking diuretics (71) and those not taking diuretics (106). Serum electrolyte levels were measured and compared between the groups.

Results

Diuretic users had significant differences in sodium, potassium, and chloride levels compared to non-users. Hyponatremia was more common in the diuretic group (33.8%) versus non-diuretic group (17%). Hypokalemia was observed in 19% of

diuretic users compared to 1.8% in non-users. Hyperkalemia was found in 7% of diuretic users and none in non-users. Thiazide diuretics caused more hyponatremia.

Conclusions

The study confirms that diuretics cause various abnormalities in electrolytes, particularly Na and K levels. Old age, comorbidities, and female sex are risk factors for hyponatremia.

Recommendations

Regular monitoring of serum electrolyte levels in patients on diuretics is essential, particularly for those at high risk. It is important to adjust diuretic therapy based on individual patient risk factors to prevent electrolyte imbalances.

Humming (Simple Bhramari Pranayama) as a Stress Buster: A Holter-Based Study to Analyze Heart Rate Variability (HRV) Parameters During Bhramari, Physical Activity, Emotional Stress, and Sleep

Objective

To see how humming (simple Bhramari Pranayama) affects heart rate variability (HRV) compared to physical activity, emotional stress, and sleep.

Methodology

The study involved 23 participants who wore a single-channel Holter device to measure their heart rate variability during four activities: humming, physical activity, emotional stress, and sleep. The data were analyzed using special software (Kubios HRV Premium).

The results for each activity were compared using statistical tests (ANOVA and paired t-tests).

Results

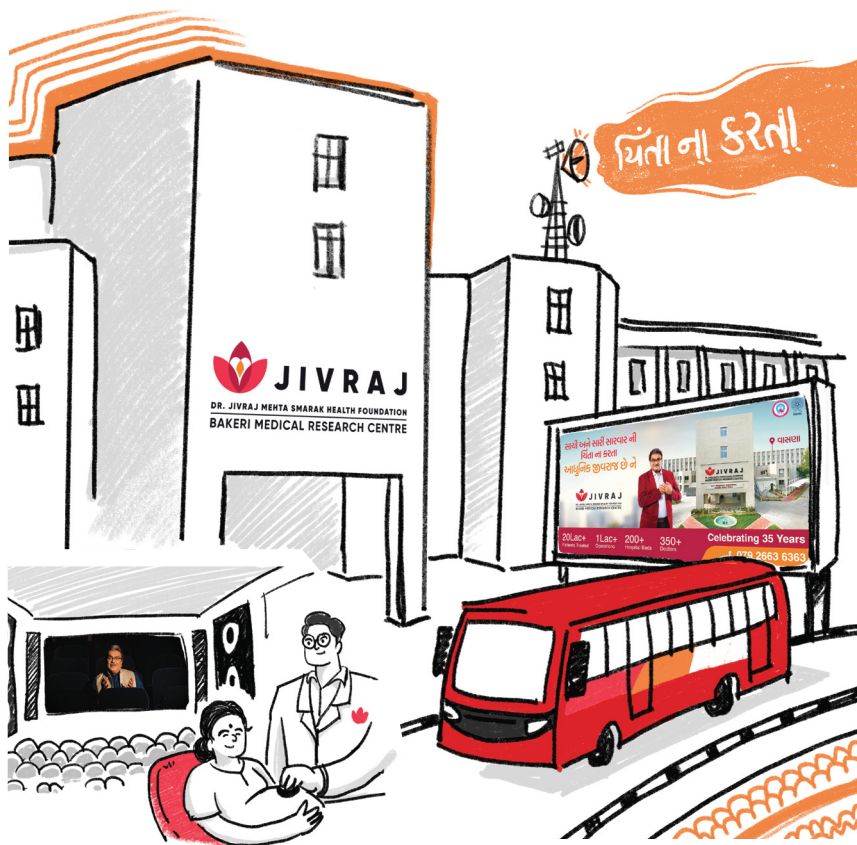
Humming produced the lowest stress index compared to physical activity, emotional stress, and sleep. Humming positively affected several HRV parameters, indicating enhanced autonomic nervous system function.

Conclusions

Humming (simple Bhramari Pranayama) is effective in reducing stress and improving heart rate variability, which means it helps relax the body's nervous system.

Recommendations

Practicing humming daily can be a useful way to manage stress and improve overall nervous system health.



Amplifying Our Purpose Through Communication:

The 2023-2024 Communication Journey

The year 2023-2024 has been the most exhilarating period for Jivraj Mehta Hospital since its inception 34 years ago. Fueled by our unwavering passion for healthcare, we embarked on a transformative journey to rejuvenate the organization with a fresh perspective.

Months of meticulous research, in collaboration with our newly appointed communications team, revealed an often-overlooked gap in the Healthcare industry: healthcare communication, despite being centered on people and wellness, lacked a truly human touch.

While conceptualizing the 'Chinta Na Karta' campaign, we looked inward and reflected on what we truly stand for. We realized that our 35-year journey has been characterized by unwavering efforts toward providing the best patient care and utmost compassion. Whether during earthquakes, riots, or the COVID-19 pandemic, our entire team at Jivraj had one thing to assure our patients: Chinta Na Karta (don't worry). This assurance, shared from the depths of our hearts, became the foundation of our campaign.

This realization gave birth to our new positioning: 'Chinta Na Karta'. This slogan encapsulates our commitment to alleviating the worries of our patients, making healthcare not just about treatment, but about compassion and understanding. Our newfound voice prompted a sweeping transformation, from the smallest details like an unnoticeable stapler to expansive 100-foot billboards.

A pivotal milestone in this journey was the Chinta Na Karta Officer (CNKO) Campaign with the renowned Siddharth Randeria. This 360-degree campaign was a comprehensive overhaul of our communication strategy. Leveraging the immense popularity of Gujarati entertainment's biggest star, we ensured our message reached every corner of the city. We painted the town red—literally and figuratively—across various platforms:

Radio | Newspaper Ads

Influencer Marketing | Theatre Ads

Bus Branding | SEO

YouTube Ads | Social Media Content

Creation | Club Magazine Ads

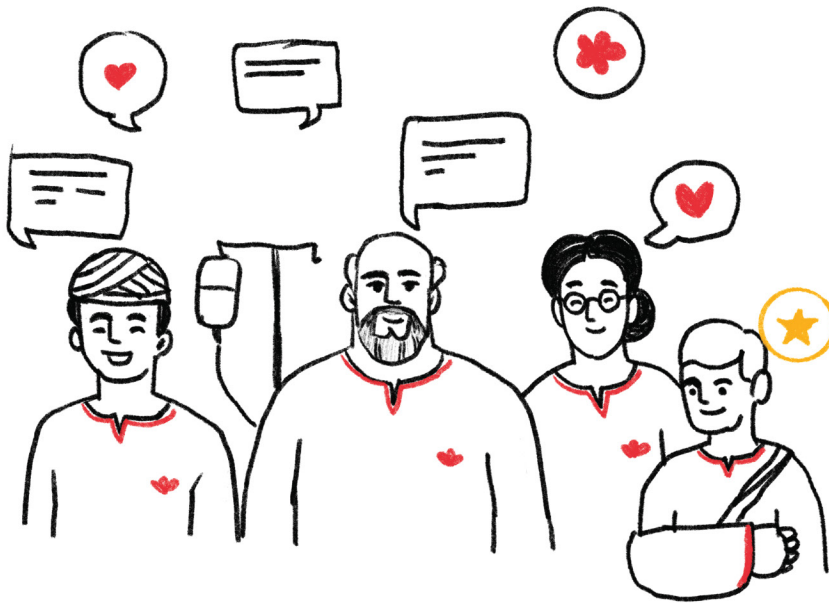
No medium of communication was left untouched or unchecked.

This campaign also showcased the newly upgraded Jivraj Mehta Hospital. The impact was profound, with 100% occupancy while the campaign was live. We are truly moved by our ability to reach those in need and provide the best healthcare.

The CNKO Campaign not only elevated our brand visibility but also reinforced our commitment to humanizing healthcare. The year 2023-2024 was indeed a leap year for us, marking a significant transformation and setting a new benchmark in the Healthcare industry.

As part of our rebranding efforts, we also upgraded the logo of Jivraj Mehta Hospital to better reflect our purpose and commitment. The new logo symbolizes our dedication to delivering compassionate care and our continuous evolution to meet the needs of our community.

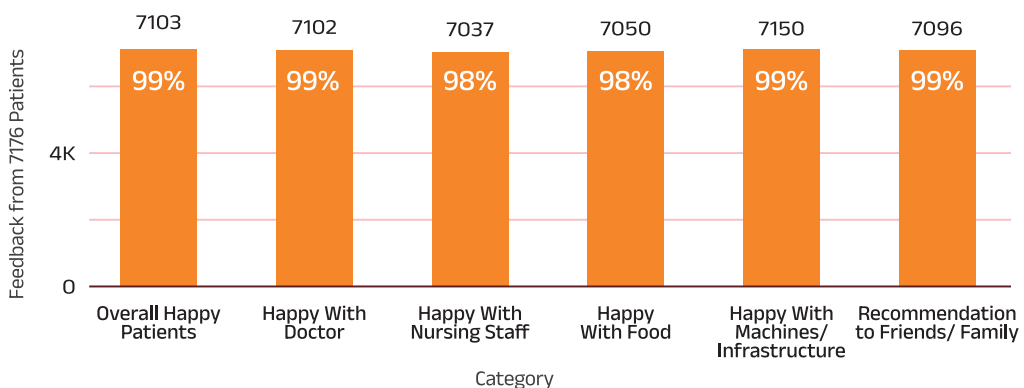
As we move forward, we remain dedicated to ensuring that our communication and care continue to resonate with the core values of empathy, understanding, and excellence.



Heartfelt Patient Feedback:

We collected comprehensive feedback from our patients, highlighting their experiences and satisfaction levels. Below is a summary of the feedback received:

Feedback Summary



Reviews

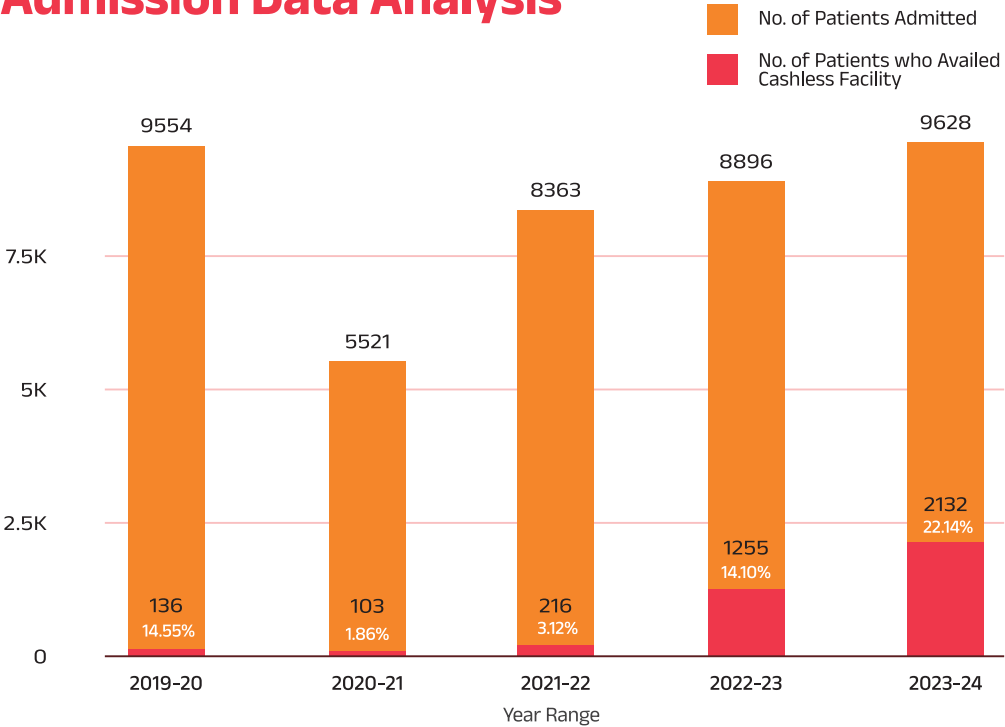
4.8



2,870 Reviews

Category	Count
Total Patients	9628
Feedback Received	7176
Total Google Reviews	2870

Admission Data Analysis



Over the past six years, our hospital has seen significant fluctuations in admissions, particularly due to the COVID-19 pandemic in 2020-21, which caused a 42% drop in admissions. However, there has been a robust recovery with admissions increasing steadily, reaching 9628 in 2023-24, partly

due to major renovations and upgrades. Notably, the number of cashless patients has grown exponentially, from 136 in 2019-20 to 2132 in 2023-24, reflecting our successful efforts to streamline billing processes and enhance patient convenience through modern, cashless transactions.

Heartfelt Testimonials:

Voices of Gratitude and Trust

Mr. Rathod

"My 86-year-old mother was hospitalized for treatment at Jivraj Mehta Hospital. The doctors regularly visited to check her progress, and the support staff was excellent. Cleanliness was well maintained, and food was always prepared according to her specific needs. The infrastructure is great! I would recommend this hospital to anyone who asked."

Mr. Trivedi

"Neat and clean place, good and responsive staff, timely management, overall a good experience."

Mr. Bhatt

"My uncle underwent surgery by Dr. Neel Patel, a urologist. The operation was successful, and we are very happy and satisfied with all the staff and services. We would like to suggest that needy people experience the care here once."

Mr. Shukla

"We received excellent service at the hospital, with a very helpful staff and transparent communication from the doctors. We are very satisfied with the treatment and would recommend this hospital to others for reliable and trustworthy life-saving services. Thank you so much!"

Mrs. Rathod

"We had a great experience at Jivraj Mehta Hospital. The doctors and staff provided excellent care, and the infrastructure is top-notch. I would recommend this hospital to anyone seeking quality medical care."

Mrs. Shah

"We had admitted our mother for electrolytes imbalance and low urine outflow to Dr. Jivraj Mehta Hospital. The room staff, on-duty doctors, and specialist doctors were all very helpful and provided excellent treatment. The hospital is very clean with spacious rooms. The ICU is also bright with good natural light. Special thanks to Ms. Kalna for all the help and cooperation during our stay in the special room as well as the CATH ICU. Food for the patient was made with utmost care as per the requirements. We were very happy with the treatment, rooms, staff, and doctors."

Mr. Barot

"My Father has been done full body health check up here. It is very fantastic service and response from the staff member. It is very nice infrastructure and clean hospital. Staff's guidance and response are very good."

Mr. Trivedi

"We received good service at the hospital, excellent staff and we are very satisfied with doctors treatment. Doctor was true to his words and very transparent in his communication throughout. We would recommend this hospital and doctor to receive reliable and trustworthy life saving service. Thank you so much!!"

Mr. Jha

The whole team at laboratory are very cordial, supportive and cooperative. They are competent in their work and are very soft spoken. Wish all the very best to them. They are true assets to the hospital.

These testimonials reflect our commitment to providing excellent healthcare services and ensuring patient satisfaction. We are grateful for the trust our patients place in us and will continue to strive for excellence in all aspects of care.

Navigating Through Change:

A Five-Year Comparative Analysis of Medical Procedures and Services

Over the past five years, our hospital has experienced significant fluctuations and growth in various key medical procedures and services. This period has been marked by the challenges of the COVID-19 pandemic, which caused dramatic decreases in medical activities in 2020-21, followed by a robust recovery and expansion in the subsequent years. Notably, in 2023-24, we saw an uptick in several areas due to renovations and major upgrades.

This section provides a comparative analysis of the trends in surgeries, radiology procedures, Cath-Lab procedures, health checkups, dialysis sessions, and outpatient department (OPD) visits from 2019-20 to 2023-24, highlighting our resilience, adaptability, and unwavering commitment to delivering exceptional healthcare services to our community.

Insights:

Pandemic Impact:

The data clearly shows the impact of the COVID-19 pandemic in 2020-21, with sharp declines across all categories.

Strong Recovery:

There is a strong recovery trend from 2021-22 onwards, with most categories surpassing pre-pandemic levels by 2023-24.

Increased Health Awareness:

The significant increase in health checkups and OPD visits in recent years suggests a growing awareness and prioritization of health among the population.

Surgical Capacity:

The number of surgeries performed has not only rebounded but also increased beyond pre-pandemic levels, indicating enhanced surgical capabilities and trust in the hospital's services.

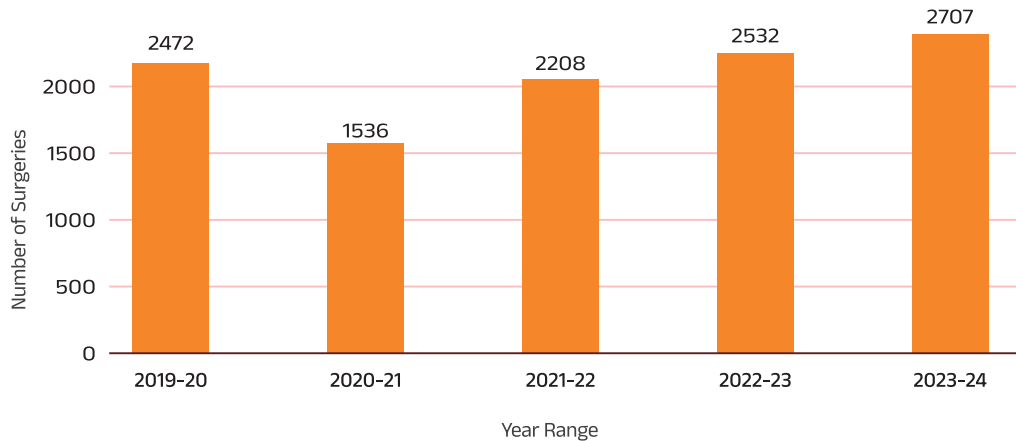
Demand for Diagnostics:

The consistent increase in radiology and pathology procedures highlights the growing importance and reliance on diagnostic imaging in patient care.

Number of Surgeries

From 2019-20 to 2023-24, our hospital saw significant recovery and growth in the number of surgeries performed. Starting with 2472 surgeries in 2019-20, the pandemic caused a sharp decline to 1536 surgeries in 2020-21, a 38% decrease. However, we rebounded strongly with 2208 surgeries in 2021-22 (a 44% increase)

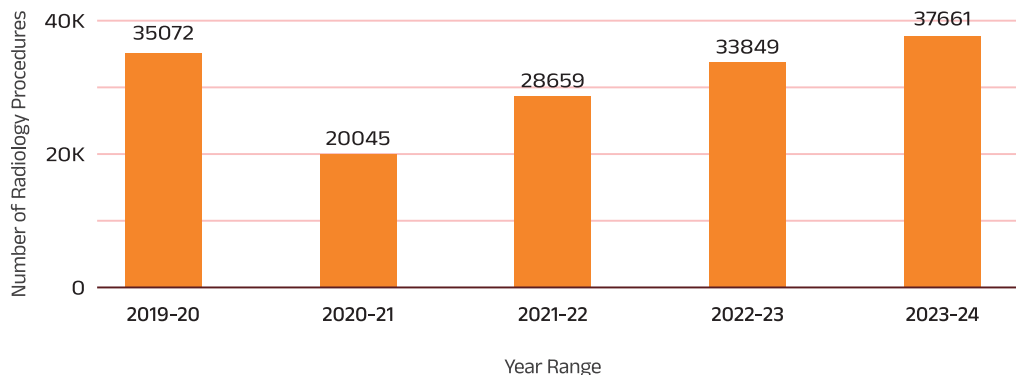
nearly returning to pre-pandemic levels with 2532 surgeries in 2022-23. By 2023-24, we surpassed pre-pandemic figures with 2707 surgeries, highlighting our enhanced surgical capacity and patient trust, bolstered by the renovations and upgrades made in 2023.



Number of Radiology Procedures

The radiology department experienced a decline from 35,072 procedures in 2019-20 to 20,045 in 2020-21, a 43% decrease due to the pandemic. With the easing of restrictions, procedures increased to 28,659 in 2021-22 (43% rise), 33,849 in

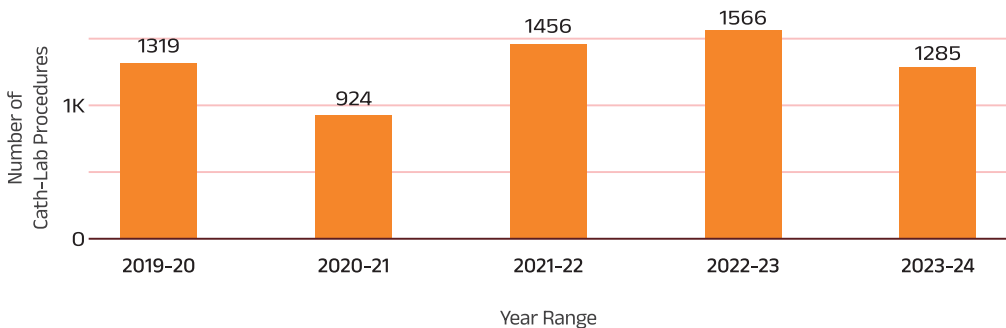
2022-23 (18% rise), and 37,661 in 2023-24, an 11% increase over pre-pandemic levels. This growth highlights the rising reliance on advanced diagnostic imaging, supported by our facility upgrades.



Number of Cath-Lab Procedures

Cath-Lab procedures also experienced fluctuations due to the pandemic. Starting with 1319 procedures in 2019-20, there was a 30% decrease to 924 procedures in 2020-21. The numbers bounced back robustly in 2021-22 to 1456 procedures (58% increase), further growing to 1566 procedures in 2022-23 (8% increase).

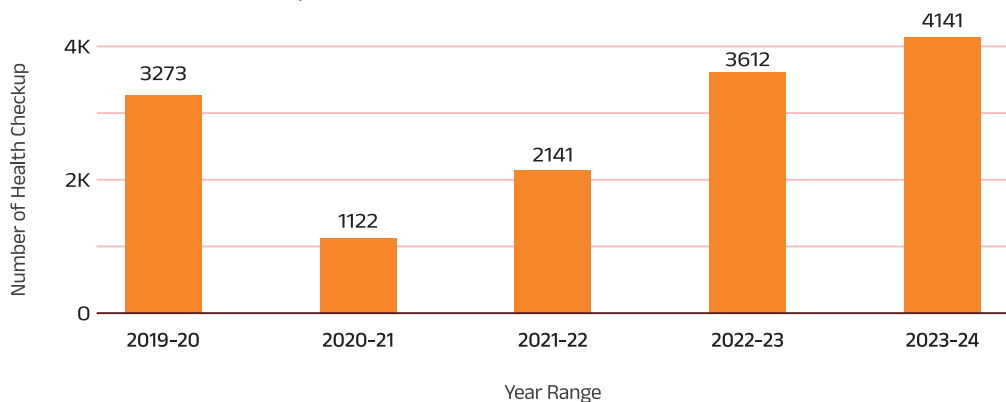
However, in 2023-24, there was a slight decline to 1285 procedures (18% decrease), possibly indicating shifts in treatment practices or patient demographics, despite the overall facility enhancements.



Number of Health Checkups

Health checkups show a clear trend of increasing health awareness. In 2019-20, 3273 checkups were conducted. The pandemic year 2020-21 saw a sharp decline to 1122 checkups (66% decrease). With the resumption of routine health services, the numbers nearly doubled to 2141 in 2021-22, followed by a substantial

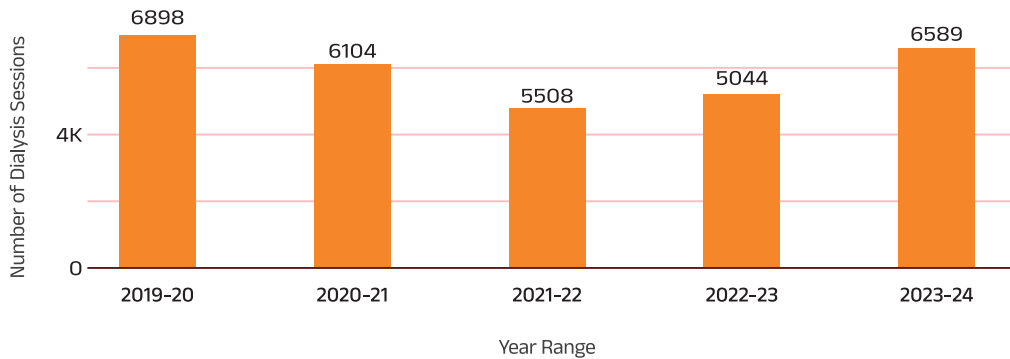
increase to 3612 in 2022-23 (69% increase), and further rising to 4141 in 2023-24 (15% increase). This continuous growth, particularly in 2023, underscores the heightened prioritization of preventive health and the impact of our upgraded facilities.



Number of Dialysis

Dialysis sessions showed a varied trend over the years. In 2019-20, 6898 sessions were recorded. There was a decline in the subsequent years with 6104 sessions in 2020-21 (12% decrease), 5508 in 2021-22 (10% decrease), and 5044 in 2022-23 (8% decrease).

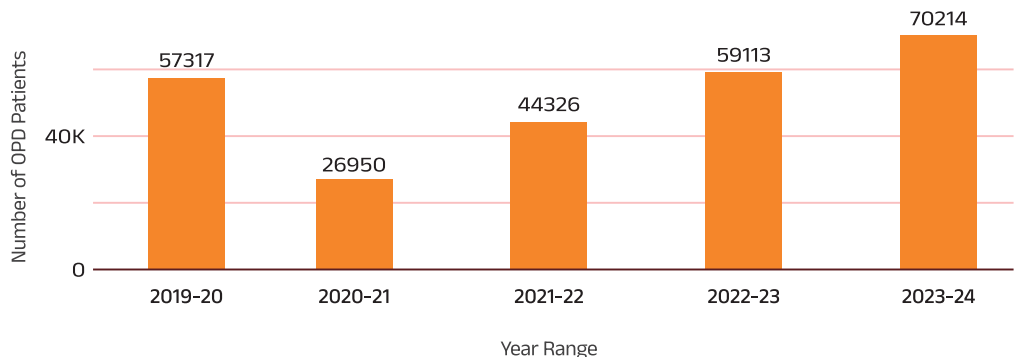
However, 2023-24 saw a significant rebound to 6589 sessions (31% increase), nearly reaching the levels of 2019-20, indicating improved patient access and service availability, influenced by the infrastructure improvements in 2023.



Number of OPD Patients

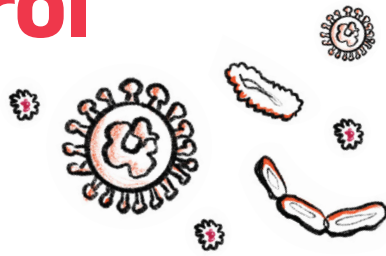
OPD visits highlight the broad impact of the pandemic and the subsequent recovery. Starting with 57317 visits in 2019-20, the number dropped dramatically to 26950 in 2020-21 (53% decrease). The recovery began with 44326 visits in 2021-22 (64% increase), surpassing pre-pandemic levels to 59113 visits in

2022-23 (33% increase), and further growing to 70214 visits in 2023-24 (19% increase). This continuous growth reflects the significant expansion in services and patient outreach, reinforcing patient trust in our healthcare facility, especially after the major upgrades in 2023.



Infection Control Excellence

Achieving Superior Standards at Jivraj Mehta Hospital



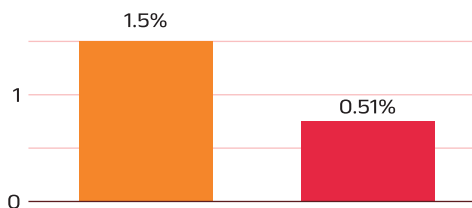
Annual Infection Control Overview

At Jivraj Mehta Hospital, our commitment to patient safety and infection control is paramount. Over the past year, we have monitored various infection control parameters to ensure the highest standards of healthcare delivery.

This section provides a detailed analysis of our infection control performance compared to the NHSN (UK) benchmarks.

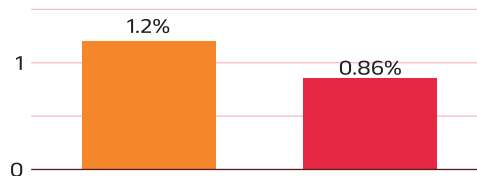
Key Infection Control Metrics

Catheter-Associated Urinary Tract Infection (CAUTI)



Our CAUTI rates were consistently below the benchmark throughout the year, reflecting the effectiveness of our infection control practices in preventing catheter-associated urinary tract infections (CAUTIs.)

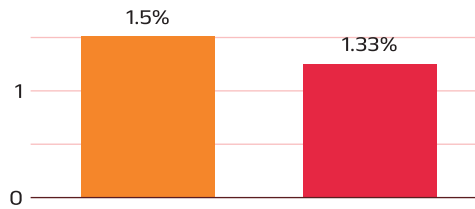
Central Line-Associated Bloodstream Infection (CLABSI)



The CLABSI rates remained below the benchmark, with occasional spikes such as in April 2023 and February 2024. Overall, our control measures have proven to be effective in minimizing CLABSI's.

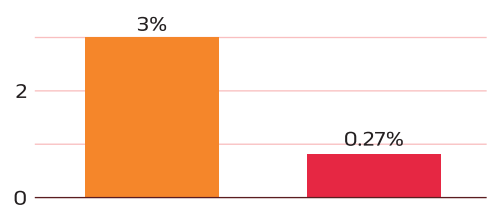
 NHSN (UK) Benchmark  Jivraj Average

Ventilator Associated Pneumonia



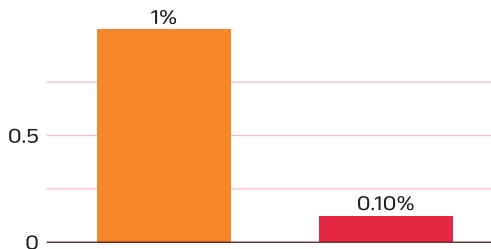
The rate of Ventilator-Associated Pneumonia (VAP) at Jivraj Mehta Hospital is 1.33%, which is below the benchmark set by the NHSN (UK) at 1.5%. This indicates that our infection control measures and ventilator care protocols are effective, resulting in a lower incidence of VAP compared to the international standard.

Surgical Site Infection



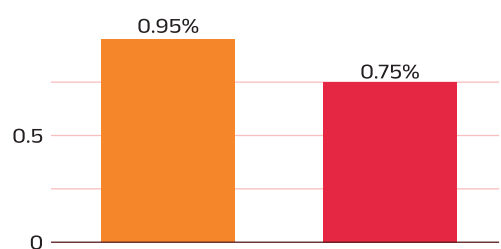
Our SSI rates were significantly below the benchmark, demonstrating the strength of our surgical infection control practices.

Hospital-Acquired Pressure Ulcer



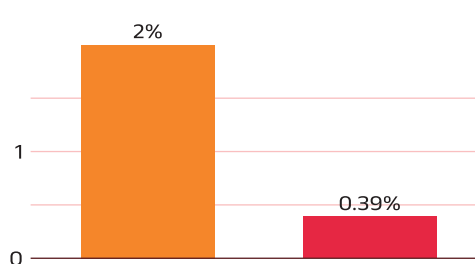
The rates for hospital-acquired pressure ulcers were well below the benchmark, showcasing our effective patient care and preventive strategies.

Hand Hygiene



The hand hygiene compliance rates were significantly below the benchmark, highlighting an area for improvement in hand hygiene practices among healthcare workers.

Needle Stick Injury



Needle stick injury rates were consistently below the benchmark, indicating good compliance with safety protocols.

 NHSN (UK) Benchmark  Jivraj Average

Exceeding Standards on every Key Performance Indicators (KPIs):

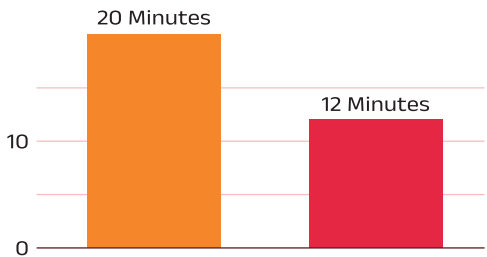
Annual Performance Review

At Jivraj Mehta Hospital, we continuously strive to improve our quality of care and operational efficiency.

Below is an analysis of our key performance indicators (KPIs) for the year 2023-24 compared to established benchmarks.

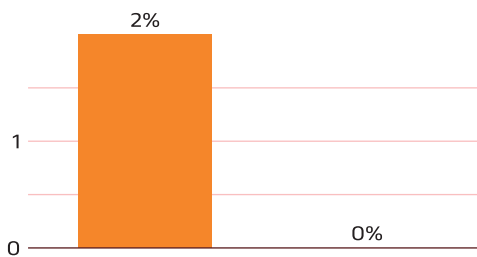
Key Performance Indicators (KPIs)

Time Taken for Initial Assessment of Indoor Patients (Wards Only)





The average time taken for initial assessments is significantly below the benchmark, indicating efficient patient evaluation processes.

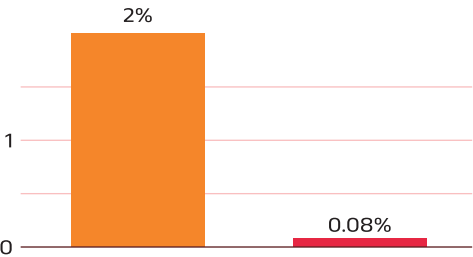
Number of Reporting Errors/1000 Investigations (Laboratory)



No reporting errors were recorded, showcasing the accuracy and reliability of laboratory tests.

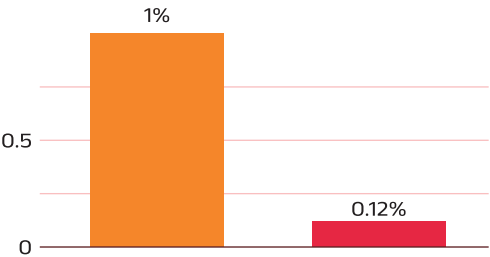
 NHSN (UK) Benchmark  Jivraj Average

Number of Reporting Errors/1000 Investigations (Radiology)



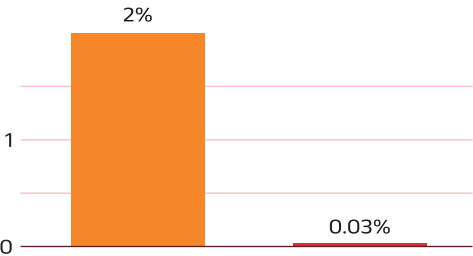
The rate of radiology reporting errors is well below the benchmark, reflecting high standards in radiological reporting.

Medication Error



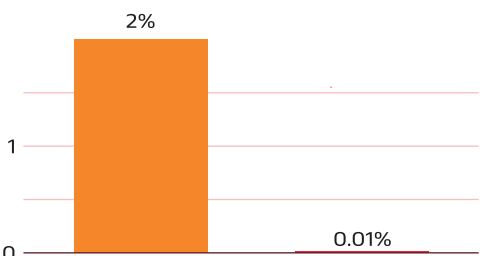
The medication error rate at Jivraj Mehta Hospital is 0.12%, which is significantly below the benchmark of less than 1%. This outstanding performance demonstrates the hospital's robust medication administration practices and commitment to patient safety.

Medication Chart with Error-Prone Abbreviations



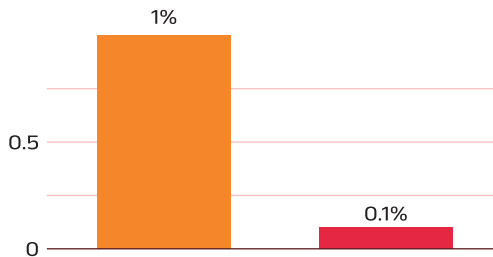
The use of error-prone abbreviations in medication charts is significantly below the benchmark, indicating strong adherence to safe prescribing practices.

In-Patients Developing Adverse Drug Reactions (ADRs)



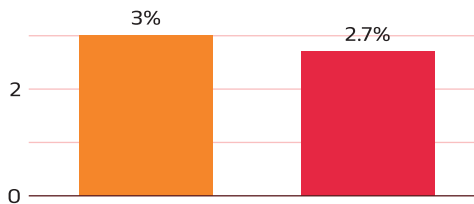
The rate of in-patients developing ADRs is very low, showcasing effective drug monitoring and patient safety measures.

Percentage of Blood Transfusion Reactions



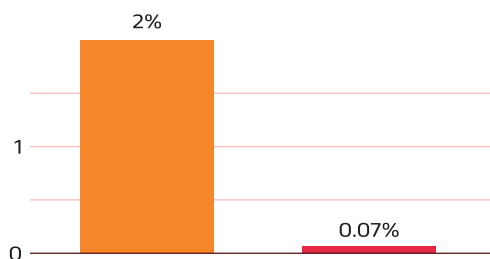
The percentage of blood transfusion reactions at Jivraj Mehta Hospital is 0.1%, which is well below the benchmark of less than 1%. This impressive result highlights the hospital's effective and safe blood transfusion practices. The significantly lower rate of transfusion reactions demonstrates the hospital's adherence to stringent protocols, careful monitoring, and rigorous quality control measures.

Mortality Ratio



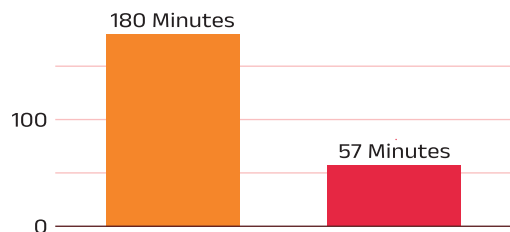
The mortality ratio at Jivraj Mehta Hospital is 2.7%, which is within the benchmark of less than 3%. This indicates that the hospital's mortality rate is in line with acceptable standards, reflecting the overall quality of care provided.

Return to Emergency Department



The use of error-prone abbreviations in medication charts is significantly below the benchmark, indicating strong adherence to safe prescribing practices.

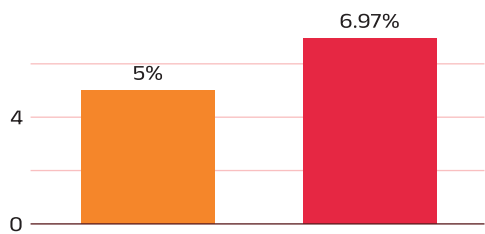
Turnaround Time (TAT) for Blood & Components



The turnaround time for blood and components is significantly below the benchmark, indicating efficient blood management processes.

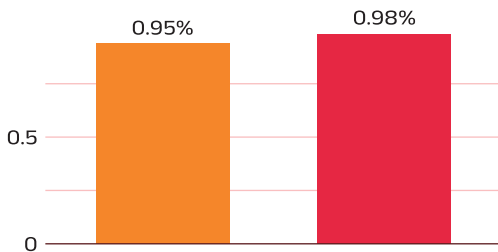
■ NHSN (UK) Benchmark ■ Jivraj Average

Records with Improper Consent



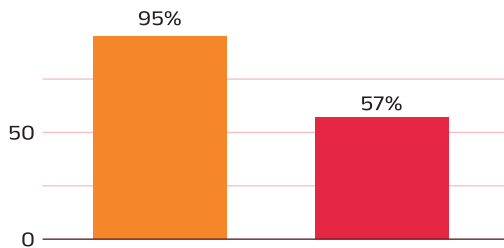
The percentage of records with improper consent is significantly above the benchmark, highlighting a critical area for improvement.

Clinical Handover Medical Officer



The clinical handover rate is above the benchmark, indicating strong communication and continuity of care during handovers

Appropriate Medication Prescription



The rate of appropriate medication prescriptions is significantly below the benchmark, suggesting the need for targeted interventions to improve prescribing practices.

Compassionate Care:

Providing Free Services to Those in Need

Free Services Provided

At Jivraj Mehta Hospital, we are committed to supporting underprivileged patients by providing essential medical services free of charge. Below is a summary of the free services rendered during the fiscal year 2023-24.

Free Beds

Total Number of Patients Provided Free Beds:

3,628

Free Dialysis

In FY 2023-24, we provided free dialysis services to numerous patients, supported by various charitable foundations and sponsors. The following data represents the total number of free dialysis sessions provided:

Total Free Dialysis Sessions:

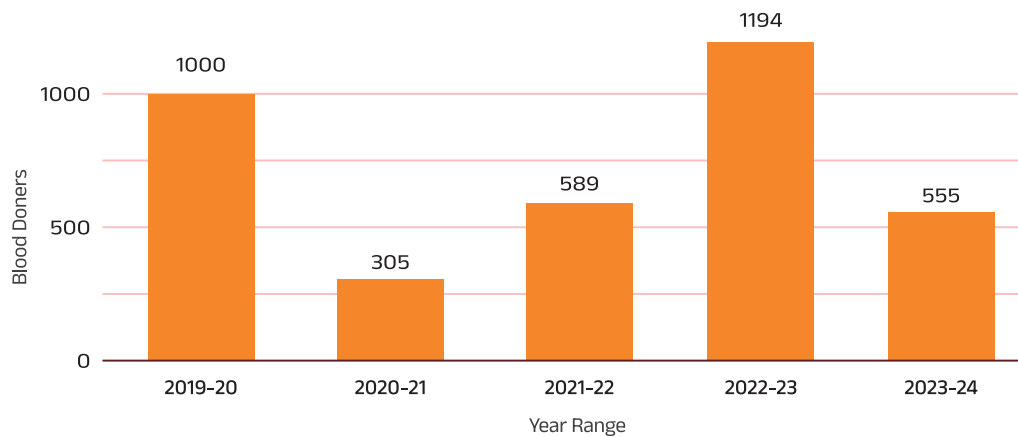
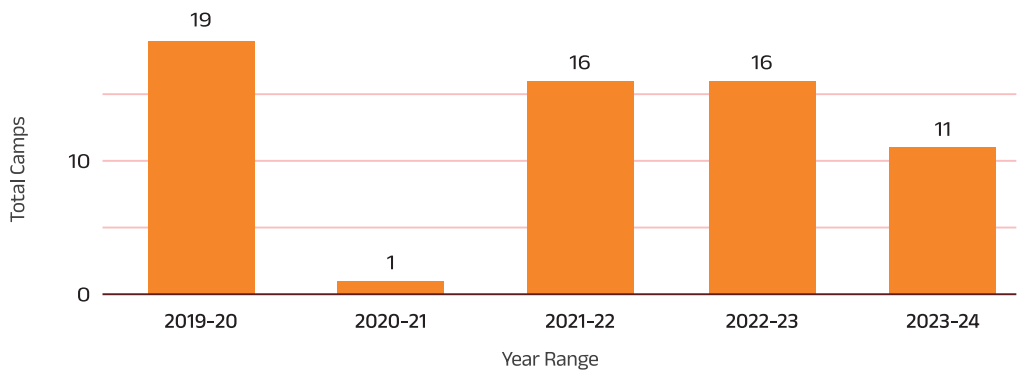
5,385

Note: The above data reflects the total number of dialysis sessions, with some patients availing themselves of the benefits multiple times.

Blood Donation Camps

Our hospital has actively organized blood donation camps over the past five years. Below is a summary of the total camps held and the number of blood donors:





Our hospital's commitment to providing free and accessible healthcare services to those in need continues to be a cornerstone of our mission. Through the generous support of sponsors and charitable foundations, we are able to extend critical medical services such as free beds and dialysis to thousands of patients annually.

Additionally, our surgical services span a wide range of specialties, reflecting our comprehensive approach to patient care. Our active participation in organizing blood donation camps further underscores our dedication to saving lives and supporting the community.

Milestones and Achievements of 2023-24

Departmental Accreditations

- National Accreditation Board for Hospitals & Healthcare Providers for Hospital (NABH)
- National Accreditation Board for Hospitals & Healthcare Providers for Nursing Excellence
- National Accreditation Board for Hospitals & Healthcare Providers for Emergency
- National Accreditation Board for Hospitals & Healthcare Providers for Blood Banks
- National Accreditation for Testing and Calibration Laboratories (NABL)
- National Accreditation Board for Hospitals & Healthcare Providers for Ethics Committee

Medical Achievements

- Abdominal Aortic Aneurysm Graft Correction: Successfully performed by Dr. Jay Shah.

Operational Excellence

Highest Daily Occupancy: Reached a record of 160 patients in a single day.

Formation of Various Clinical Committees: Established to enhance clinical governance and performance.

Weekly Review Meetings: Regularly held to evaluate departmental and organizational performance.

Paperless Clinical and Medical Record Audit: Implemented using Google Forms for efficiency.

Social Media Reviews: Integrated Google, Instagram, and Facebook reviews at each touchpoint.

Pneumatic Chute System: Introduced for efficient sample and medication dispatch.

CSSD Centralization: Centralized Sterile Supply Department for better resource management.

Introduction of Gene Expert Machine (TB): Enhanced TB diagnostic capabilities.

1000+ Multidisciplinary Staff Trainings: Conducted to improve skills and knowledge.

Implementation of Planned Discharge Process: Streamlined patient discharge for improved efficiency.

Full-Time Consultants Model:

Transitioned to a full-time consultants model for better patient care.

Digital Innovations

ABDM Portal Registration: Facilitated digital health records management.

Med-learn App: Launched for digital training of staff.

Adrenaline App: Introduced for digital human resource management.

Employee Engagement

Days Celebration: Organized various events to celebrate special days.

Employee of the Month Celebration: Recognized outstanding employees monthly.

Efficient Parking Space Management:

Improved parking facilities and management.

Significant Overtime Reduction:

Achieved through better operational efficiency.

The year 2023-24 has been marked by significant achievements at Jivraj Mehta Hospital, ranging from departmental accreditations to medical milestones and operational improvements. Our continuous efforts to integrate digital solutions and enhance patient care have led to remarkable outcomes. The commitment to excellence in healthcare is reflected in every initiative undertaken, ensuring we uphold our mission to provide high-quality, compassionate care to our community.



Process Improvement & HR Initiatives

Process Improvement

At Jivraj Mehta Hospital, we are continuously striving to enhance our operational efficiency and patient care. In the fiscal year 2023-24, several key process improvements were implemented:

1. Medical MIS - Monthly:

Implemented a monthly Medical Management Information System (MIS) to streamline data collection and reporting, ensuring timely and accurate decision-making.

2. Digital Patient Feedback System:

Introduced a digital patient feedback system to gather real-time feedback, enabling us to quickly address patient concerns and improve the overall patient experience.

3. Induction Training to New Joiners:

Conducted comprehensive induction training programs for new employees to ensure they are well-integrated into our organizational culture and equipped with the necessary skills and knowledge.

4. Weekly Review Meetings:

Held regular weekly review meetings to assess departmental performance, discuss challenges and implement improvements, fostering a culture of continuous improvement.

Human Resources Achievements

As we reflect on the past year, it is with great pride that we share the significant strides our hospital has made in nurturing talent and fostering a culture of growth and development. At the heart of our success lies our people—the driving force behind our achievements and the cornerstone of our competitive advantage. Through strategic initiatives and robust programs, we have remained steadfast in our commitment to attract, retain, and empower top talent.

Our relentless focus on talent development has not only equipped our workforce with the skills and capabilities needed to excel but has also cultivated a culture of continuous learning and innovation. From comprehensive training programs to mentorship opportunities, we have provided our employees with the resources and support they need to thrive in a rapidly evolving healthcare industry.

Shaping Our Human Capital

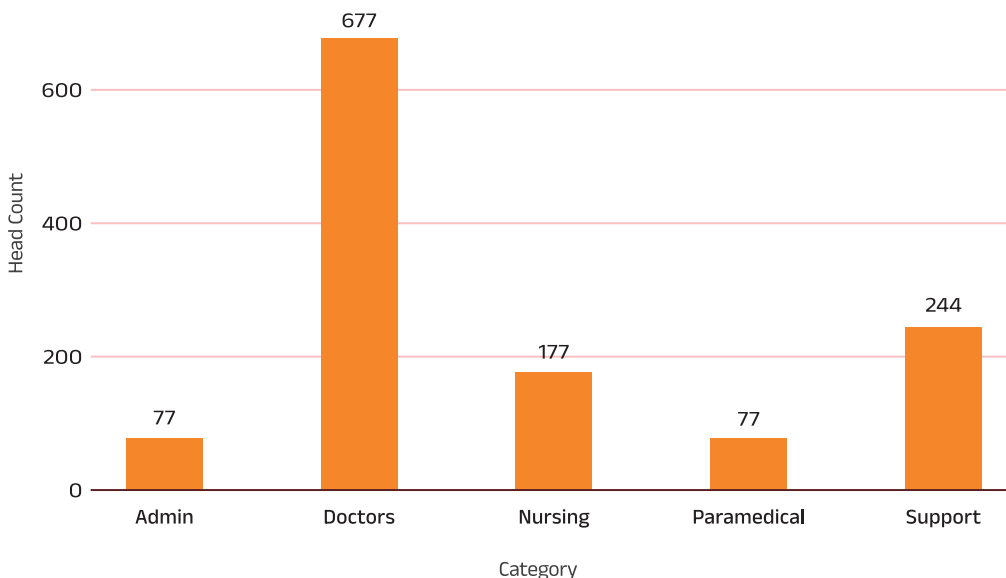
We are fortunate to have a dedicated and diverse team shaping our future. Equally important is the fact that we want to build a long-lasting relationship with our employees. For that reason, diversity and inclusion remain very important issues for us. We constantly aim to expand the diversity of thought, background, experience, and gender of our employees. We are committed to nurturing talent, building careers and inspiring people so they can contribute their best and by doing all of these, build a strong organization.

Looking ahead, we will continue to prioritize talent development, strengthen

our employee value proposition and foster a culture of collaboration and innovation that enables every individual to reach their full potential. As we embark on the next chapter of our journey, we do so with confidence, knowing that our people-centric approach will propel us towards greater success and sustainable growth.

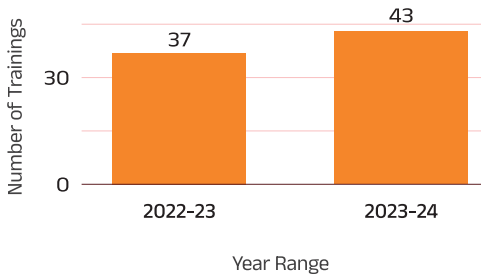
Achievements in HR:

Headcount Growth: The Jivraj family has grown to 1,252 members, including doctors, nurses, support staff and all associates.



Empowering Success Through Diverse Training Approaches:

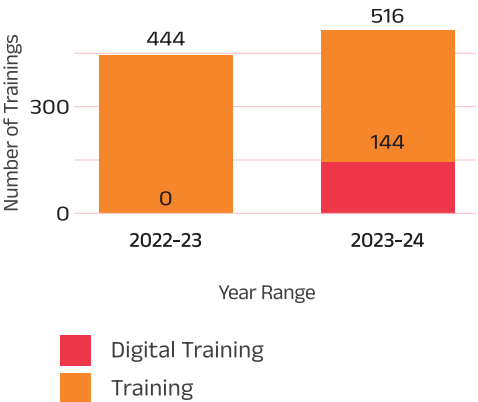
We continuously prioritize Learning & Development as it is essential to our success. Our approach encompasses not only classroom training but also on-the-job training, Continuing Nursing Education (CNE) sessions, conferences, and seminars. We address a wide range of topics, including Basic and Advanced Life Support, Fire and Safety, Hazardous Materials Management, Biomedical Waste Management, and the rights and responsibilities of both employees and patients. Additionally, we emphasize soft skills such as effective communication, empathetic care, and professional grooming, ensuring a comprehensive development program for our team.

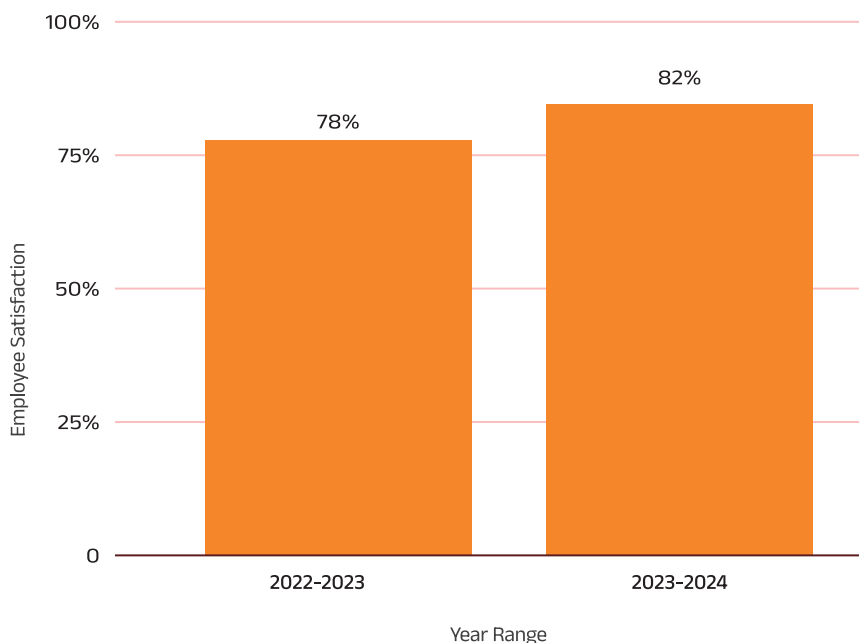


A Shift Towards Digital Training with Medlern:

From the fiscal year 2022-23 to 2023-24, there has been a significant expansion in the training program, with a total increase of 216 sessions (48.6% increase). In 2022-23, 444 in-person training sessions were conducted, while in 2023-24, the number of in-person sessions increased to 516. Additionally, 144 digital training sessions were introduced in 2023-24,

thanks to the launch of Medlern, a dedicated platform for digitized training. This strategic shift towards digital training reflects the organization's commitment to diversifying training methods and enhancing accessibility and flexibility for learners. Medlern has enabled the integration of technology into the training program, supporting a comprehensive development approach that includes both in-person and remote learning opportunities.





Employee Satisfaction: The employee satisfaction data for Jivraj Mehta Hospital shows a positive trend over the past two years. In 2022-23, the employee satisfaction rate was recorded at 78%. This figure improved to 82% in 2023-24, reflecting a 4% increase. This upward trend suggests that the initiatives and changes implemented by the hospital to enhance the work environment, support employee well-being, and foster a culture of growth and development have been effective.

Other HR Initiatives:

- NABH Compliance: Maintained NABH compliance across all HR practices.
- Achiever of the Month Program: Successfully implemented a reward and recognition program in collaboration with internal leaders.
- HR Digitization: Implemented Adrenalin for digitizing the complete employee life cycle.
- Mentorship for Newcomers: Ensured the integration of newcomers into the Organization's culture and values through dedicated mentoring.
- Employee Celebrations: Monthly celebrations for days like birthdays, International Nurses Day, Doctors Day, and Admin Day.
- Standardized Protocols: Established standardized protocols for new consultant associations.

Future Plans:

- **Best Place to Work Recognition:** Strive for recognition as the best place to work.
- **Attrition Rate Target:** Maintain an attrition rate below 2%.
- **NABH Compliance:** Ensure 100% NABH compliance.
- **JCI Accreditation:** Work towards achieving Joint Commission International (JCI) accreditation.

The advancements in process improvement and human resources at Jivraj Mehta Hospital in 2023-24 highlight our commitment to operational excellence and talent development. By fostering a culture of innovation, continuous learning, and inclusivity, we ensure that our team is well-equipped to provide the highest quality of care to our patients. As we look forward to the future, our focus remains on enhancing our people-centric approach to drive sustainable growth and success.



Enhancing Patient Care with Advanced Medical Equipments

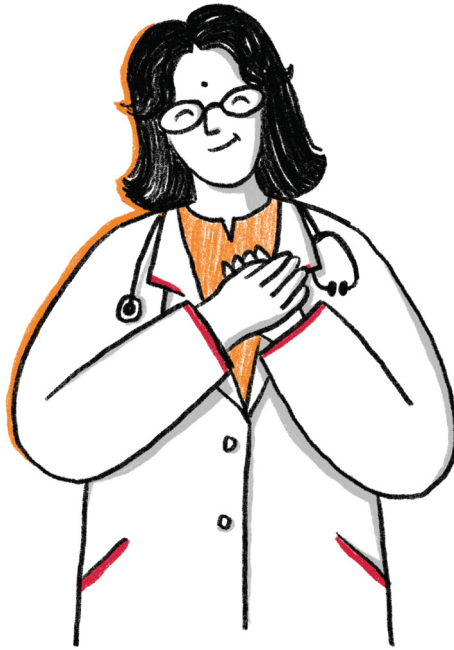
At Jivraj Mehta Hospital, our unwavering commitment to excellence is reflected in our continuous investment in state-of-the-art medical equipment. The recent additions to our facility, including advanced centrifuges, ultra-low freezers, defibrillators, ventilators, dental chairs, dialysis monitors, and sophisticated diagnostic tools such as the GeneXpert machine, are pivotal in providing modern healthcare. These cutting-edge technologies enable our medical professionals to perform complex procedures with precision, enhance

diagnostic accuracy, and ensure comprehensive patient care. By equipping our departments with the latest medical advancements, we not only improve our operational efficiency but also elevate the standard of care we offer. This ensures that every patient receives the best possible treatment, fostering a healthcare environment where innovation meets compassionate care. These investments are not just about upgrading our facilities; they are about fulfilling our mission to deliver holistic and complete healthcare, making a significant difference in the lives of those we serve.

Major Capital Equipments Installed

(FY 2023-24)

No.	Department	Equipment	Make	Qty	Amount(Rs)
1	OT	Ot Table	Staan	2	24,00,000
2	OT	Neuro Drill	Stryker	1	21,39,000
3	OT	litv	Allengers	1	19,50,000
4	Laboratory	Genexpert	Cepheid India Pvt Ltd	1	15,05,343
5	OT	Cautery	Valleylab	2	15,00,000
6	OT	Ot Light	Maquet	1	14,98,906
7	Dialysis	Monitor	BPL	12	10,80,000
8	Cath Iccu	Ventilator	Airliquid Medical System	1	10,40,000
9	OT	Anaesthesia Trolley	Wipro GE	1	10,25,000
10	Casualty	Defibrillator	BPL	3	5,71,200
11	Blood Bank	Ultra Low Freezer -80	Remi	1	4,65,215
12	Laboratory	Tissue Processor	Bright Technologies	1	4,00,000
13	Dental OPD	Dental Chair	Confident Dental Equipment	1	3,84,000



Heartfelt Gratitude to Our Generous Donors

We extend our deepest gratitude to all our generous donors who have supported Jivraj Mehta Hospital in the fiscal year 2023-24. Your unwavering commitment and substantial contributions have been instrumental in our mission to provide exceptional healthcare services. From Shri Ramakantbhai Group, with their remarkable donation of Rs.29,000,000, to the numerous individuals and organizations who have donated amounts ranging from Rs.1,500 to several million, each contribution has made a significant

impact. Your support has enabled us to enhance our facilities, invest in advanced medical equipment, and extend our reach to serve more patients with the highest standards of care. We are profoundly grateful for your trust and belief in our vision. Together, we continue to make a difference in the lives of countless individuals, ensuring a healthier and brighter future for all. Thank you for being an integral part of our journey and for your unwavering generosity.

No.	Donor Name	Cumulative Donations untill 31.03.2024 Rs. in Lakhs
1	Bakeri Family	2,621
2	Ishwardas Jhabarmal Family	795
3	Pravin Atmaram Family	636
4	AIA Engineering	375
5	Navnit Choksi Family	360
6	Sunil Niranjan Jhaveri	251
7	Cygnat Infotech	251
8	Wagh Bakri Group	243
9	Dr. K R Shroff Foundation	225
10	Rati Kamdar Group	215
11	Pushpa Shah Group	183
12	GMDC	155
13	Dinesh Kantilal Trust	149
14	Nandkishore Shodhan Group	104
15	Nikhil-Manthan Samariya	104
16	Dr Devi Dalal	102
17	Pushpavati Kantilal Trust	102
18	BPC Projects	100
19	Kalpana Foundation Group	75
20	Prabhudas Kishordas Patel	74
21	Choksi Exports Group	66
22	e Infochips	65
23	Nrups Foundation	60
24	Madanmohan Ramanlal Family	56
25	Shanta Motilal Trust	55
26	Krishan-Aditya Maheshwari	54
27	Mayur Patel Family	54
28	Sonal Modi	53

No.	Donor Name	Cumulative Donations untill 31.03.2024 Rs. in Lakhs
29	Girish Navani Family	51
30	Bodal Chemicals	51
31	Dr. Kalyan Vasa Family	51
32	Infinium Motors	51
33	Kokila R Trivedi	51
34	Parikh Enterprises	51
35	Ganpatraj Chowdhary	51
36	Dardionu Rahat Fund	51
37	Firdos Cambatta	50
38	Samveg Lal Group	50
39	Kalupur Com. Co-op Bank	46
40	Hemant Shah Family	46
41	Dashrath Parikh	36
42	Torrent Pharma Group	35
43	Shailesh Parikh Group	35
44	Cambatta Family	33
45	Bharat Kshatriya & Family	30
46	Leena Chinu Mehta	30
47	Jamnadas & Co	30
48	Kaushik Patel	30
49	Meghmani Organics	27
50	Ganesh Housing Group	25
51	Gujarat State Government	25
52	Purushottamdas Mehta	25
53	Sunil Danak	25
54	Chandrika Narendra Vyas	25
55	Daksha Pankaj Shah	25
56	Fairchem Organics	23

No.	Donor Name	Cumulative Donations until 31.03.2024 Rs. in Lakhs
57	Kartik Bakeri	23
58	Khyati Chemicals	22
59	Subharti S Shah	21
60	Inductotherm India	21
61	Vinodchandra Parikh	21
62	Ramesh Patel Meghmani	21
63	Parthivkumar Adhyaru	21
64	Akbar Divecha	21
65	Amrish Parikh	20
66	Dr Jayendra Nanavati	20
67	Prakash Bhagwati Group	20
68	CERA India	20
69	Nitin Parikh	18
70	Deep Infraprojects LLP	16
71	Suraj & Sharda Patel	16
72	Sharad Kinarivala	15
73	Sheth Manilal R V B Trust	15
74	Sharda Shah	15
75	Sulochana & Suvarna Dalal	15
76	Crown Decor Pvt. Ltd.	15
77	Taral Bakeri	13
78	Pravinlata H Charitable Trust	12
79	Shantilal Parikh Trust	12
80	Babuba - Leela - Surya	11
81	Dinesh M Mehta	11
82	The Serenity Trust	11
83	Sijcon Consultants	11
84	Chandrakant Kantilal Thakkar	11

No.	Donor Name	Cumulative Donations untill 31.03.2024 Rs. in Lakhs
85	Ashok R Vajechand	11
86	Kamal B Trivedi	11
87	Janjyot Investment	10
88	Kanu N Shah	10
89	Dolat & Nanu Trivedi	10
90	Dr Jayant Haribhakti Estate	10
91	Dushyant Dave	10
92	Amit Mehta	10
93	Hargovandas Laxmichand	10
94	Justice Sharad Shah	10
95	Kanta-Jyoti Nanavati	10
96	Rama Multi-Tech	10
97	Shailtex Lubricants	10
98	Kanaiyalal Motilal	10
99	Bharat Jash Patel	10
100	Manorama J Saraiya	10
101	Hester Biosciences Limited	10
102	Sudha Ashok Bhandari	10
103	Vinod J Chinai	10
104	Hardik J Shah	10



JIVRAJ

DR. JIVRAJ MENTA SMARAK HEALTH FOUNDATION
BAKERI MEDICAL RESEARCH CENTRE

24x7 EMERGENCY DEPARTMENT
आवृत्त २४ घण्टे सार्वजनिक चिकित्सालय

AMBULANCE

ચિંતા ના ફરતા



Looking Ahead:

A Commitment to Excellence and Compassion in Healthcare

As we reflect on the achievements and advancements of the past year at Jivraj Mehta Hospital, it is evident that our commitment to excellence, innovation, and compassionate care continues to drive our success. From significant process improvements and rigorous research endeavors to the acquisition of advanced medical equipment and the nurturing of our human capital, every initiative undertaken is a testament to our dedication to providing the highest quality of healthcare.

Our focus on process improvement has led to reduced mortality rates, the implementation of a digital patient feedback system, and the integration of

comprehensive induction training for new joiners. Weekly review meetings have ensured that we continuously monitor and enhance our performance, fostering a culture of continuous improvement.

The remarkable achievements in our Human Resources department highlight our strategic efforts to attract, retain, and develop top talent. Through programs such as the Achiever of the Month, mentorship initiatives, and extensive training platforms, we have empowered our workforce to excel in a rapidly evolving healthcare landscape. Our emphasis on diversity, inclusion, and digitalization has further strengthened our team, making Jivraj Mehta Hospital a preferred place to work and grow.

In the realm of medical research, the Bakeri Medical Research Centre has been a beacon of innovation, conducting numerous sponsored and in-house projects, and publishing significant scientific papers. Our dedication to exploring new treatment avenues and understanding disease trends has positioned us at the forefront of medical science.

The acquisition of cutting-edge medical equipment across various departments underscores our commitment to providing modern healthcare. These advancements have enabled us to perform complex procedures with greater precision, enhance diagnostic capabilities, and ensure comprehensive patient care. By equipping our facility with state-of-the-art technology, we are better prepared to meet the diverse needs of our patients.

Our charitable initiatives have also made a profound impact, providing free beds, dialysis, and surgeries to those in need. The organization of blood donation camps and other community outreach programs reflect our commitment to serving the broader community and supporting public health.

As we look to the future, we are dedicated to furthering our mission of delivering exceptional healthcare. Our plans for a paperless hospital, mobile applications for digital patient interaction, and achieving JCI accreditation are just a few of the initiatives that will propel us towards even greater success.

We extend our heartfelt gratitude to our patients, staff, and partners for their unwavering trust and support. Together, we will continue to build on our legacy of excellence, ensuring that Jivraj Mehta Hospital remains a leader in healthcare, innovation, and compassionate service. Thank you for being a part of our journey to make the world a healthier and better place.

Warm Regards,
Jivraj Parivar

Independent Auditor's Report

Modi Jain & Co.

Chartered Accountants

E- 26, 5th Floor, Capital Commercial Centre

Nr UCO Bank, Ellis Bridge

Ashram Road, Ahmedabad 380009

Tele : (079) 48011019

Email ID : pratikmodi21_89@yahoo.com

To,

The Trustees of

DR JIVRAJ MEHTA SMARAK HEALTH

FOUNDATION

(Trust Registration No.

F/951/29-11-1983/AHMEDABAD)

Opinion

We have audited the financial statements of DR JIVRAJ MEHTA SMARAK HEALTH FOUNDATION, Bakeri Medical Research Centre (the "Trust") which comprise the Balance Sheet as at 31st March, 2024 and the Income and Expenditure Account for the year then ended in which are included their Units (Health Care Unit & Research Unit) which are separately audited by us, and notes to the financial statements, including a summary of Significant Accounting Policies and other explanatory information. In our opinion, the accompanying financial statements give a true and fair view of the financial position of the Trust as at 31st March, 2024 and excess of income over expenditure for the year then ended and are prepared, in all material respects, in accordance with The Gujarat Public Trusts Act, 1950 (Bom. XXIX of 1950).

Basis for Opinion

We conducted our audit in accordance with the Standards on Auditing ("SAs") issued by ICAI. Our responsibilities under those standards are further described in the Auditor's Responsibilities for the Audit of the Financial Statements section of our report. We are independent of the Trust in accordance with the Code of Ethics issued by the Institute of Chartered Accountants of India ("ICAI") together with the ethical requirements that are relevant to our audit of the financial statements. An audit is carried out considering the provisions of The Gujarat Public Trusts Act, 1950 (Bom. XXIX of 1950) and the rules there under, and we have fulfilled our other ethical responsibilities in accordance with these requirements and the Code of Ethics. We believe that the audit evidence we have obtained is sufficient and appropriate to provide a basis for our opinion.

Responsibilities of Management and Those Charged with Governance for the Financial Statements

Management of the Trust is responsible for the preparation and fair presentation of the financial statements in accordance with The Gujarat Public Trusts Act, 1950 (Bom. XXIX of 1950) that give a true and fair view of the financial position and financial performance in accordance with the accounting principles generally accepted in India. This responsibility also includes maintenance of adequate accounting records in accordance with the provisions of The Gujarat Public Trusts Act, 1950 (Bom. XXIX of 1950) for safeguarding of the assets of the Trust and for preventing and detecting frauds and other irregularities; selection and application of appropriate accounting policies; making judgments and estimates that are reasonable and prudent; and design, implementation and maintenance of adequate internal financial controls, that were operating effectively for ensuring the accuracy and completeness of the accounting records, relevant to the preparation and presentation of the financial statements that give a true and fair view and are free from material misstatement, whether due to fraud or error.

In preparing the financial statements, management of the Trust is responsible for assessing the Trust's ability to continue as a going concern, disclosing, as applicable, matters related to going concern and using the going concern basis of accounting unless management either intends to liquidate the entity or to cease operations, or has no realistic alternative but to do so.

Those charged with governance are responsible for overseeing the Trust's financial reporting process.

Auditor's Responsibilities for the Audit of the Financial Statements

Our objectives are to obtain reasonable assurance about whether the financial statements as a whole are free from material misstatement, whether due to fraud or error, and to issue an auditor's report that includes our opinion. Reasonable assurance is a high level of assurance, but is not a guarantee that an audit conducted in accordance with SAs will always detect a material misstatement when it exists. Misstatements can arise from fraud or error and are considered material if, individually or in the aggregate, they could reasonably be expected to influence the economic decisions of users taken on the basis of these financial statements. As part of an audit in accordance with SAs, we exercise professional judgment and maintain professional skepticism throughout the audit. We also:

- Identify and assess the risks of material misstatement of the financial statements, whether due to fraud or error, design and perform audit procedures responsive to those risks, and obtain audit evidence that is sufficient and appropriate to provide a basis for our opinion. The risk of not detecting a material misstatement resulting from fraud is higher than for one resulting from error, as fraud may involve collusion, forgery, intentional omissions, misrepresentations, or the override of internal control.

- Obtain an understanding of internal control relevant to the audit in order to design audit procedures that are appropriate in the circumstances
- Evaluate the appropriateness of accounting policies used and the reasonableness of accounting estimates and related disclosures made by management.
- Conclude on the appropriateness of management's use of the going concern basis of accounting and, based on the audit evidence obtained, whether a material uncertainty exists related to events or conditions that may cast significant doubt on the Trust's ability to continue as a going concern. If we conclude that a material uncertainty exists, we are required to draw attention in our auditor's report to the related disclosures in the financial statements or, if such disclosures are inadequate, to modify our opinion. Our conclusions are based on our audit evidence obtained up to the date of our auditor's report. However, future events or conditions may cause the Trust to cease to continue as a going concern.
- Evaluate the overall presentation, structure and content of the financial statements, including the disclosures, and whether the financial statements represent the underlying transactions and events in a manner that achieves fair presentation.

We communicate with those charged with governance regarding, among other matters, the planned scope and timing of the audit and significant audit findings, including any significant deficiencies in internal control that we identify during our audit.

We also provide those charged with governance with a statement that we have complied with the relevant ethical requirements regarding independence, and to communicate with them all relationships and other matters that may reasonably be thought to bear on our independence, and where applicable, related safeguards.

Report on Other Legal and Regulatory Requirements

As required by The Gujarat Public Trusts Act, 1950 (Bom. XXIX of 1950) and on the basis of such checks as we considered appropriate and necessary and according to the information and explanations given to us, we report that:

1. The accounts are maintained regularly and in accordance with the provisions of The Gujarat Public Trusts Act, 1950 (Bom. XXIX of 1950) and the Bombay Public Trusts (Gujarat) Rules, 1961. The books of account and records are maintained as per CBDT Notification dated 10th August, 2022, called the Income Tax (24th Amendment) Rule, 2022 applicable from F.Y. 2022-23.

2. The Receipts and disbursements are properly and correctly shown in the Accounts.

3. The Cash balances and vouchers are in the custody of the Cashier/Accountant on the date of audit and are in agreement with the Accounts.

4. Books, Deeds, Accounts, vouchers and other documents and records required by us were produced before us.

5. The inventory, certified by the Trustees, of the movable properties of the Trust has been maintained.

6. The Accountant-in-charge appeared before us and furnished the necessary information required by us.

7. The property or Funds of the Trust were not applied for any object or purpose other than the objects or purposes of the

Trust.

8. The amounts of Advances outstanding for more than one year are Rs. Nil. and the amounts written off are Rs. 2,38,118/- (P.Y. Rs. 51,573/-).

9. Tenders were not invited but the quotations were obtained in most of the cases for comparative prices in respect of repairs and construction, where the expenditure exceeded Rs 5,000/-.

10. The Trust has made various investments as shown in Schedule-F to the Financial Statements as at 31st March, 2024. Some of the investments are not in accordance with the provisions of Section 35 of The Gujarat Public Trusts Act, 1950 (Bom. XXIX of 1950), and they have since been matured and liquidated. However, they are in accordance with the provisions of Section 11(5) of the Income Tax Act, 1961.

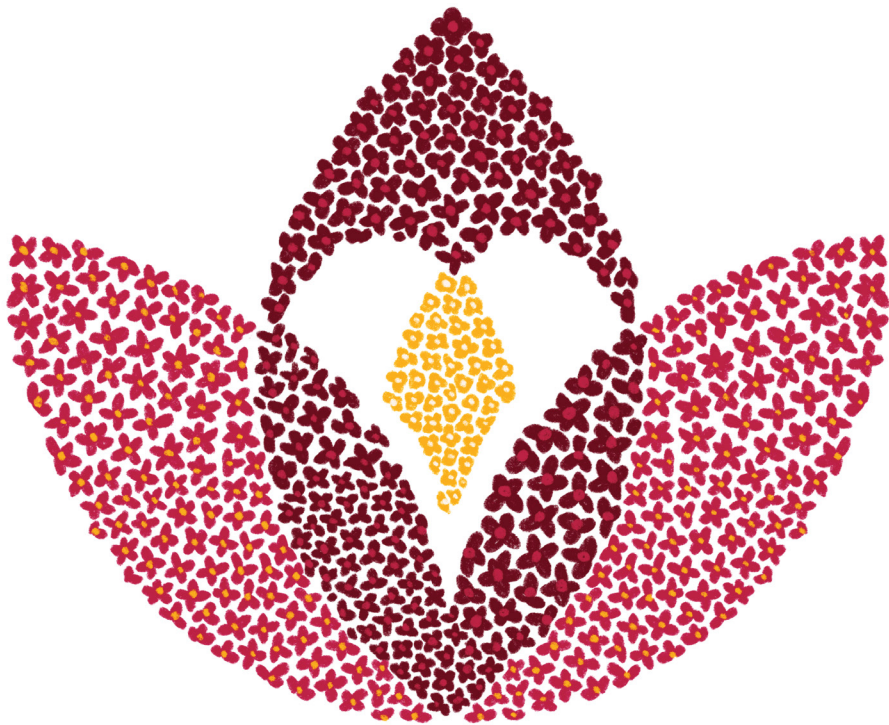
11. Separate books of account, records, vouchers and other documents are maintained by Healthcare Unit and Research Unit which are separately audited by us. These Units' separate Financial Statements are also attached along with Trust's Financial Statements.

12. The books of account are maintained on accrual system of accounting.

For MODI JAIN & Co.
Chartered Accountants
(Firm Registration No. 139197W)

PRATIK MODI (Partner)
Membership No. 149927
UDIN: 24149927BKFHFZ9368

Place: Ahmedabad
Date: 10/07/2024



THE GUJARAT PUBLIC TRUSTS ACT, 1950 (BOM. XXIX of 1950) SCHEDULE IX-C (see Rule 32)
Name of Public Trust: Dr. JIVRAJ MEHTA SMARAK HEALTH FOUNDATION | BAKERI MEDICAL RESEARCH CENTRE
Trust No. : F/951/AHMEDABAD | Date of Registration: 29/11/1983

Statement of income liable to contribution for the year ending 31st March, 2024

Address of Trust: Dr. Jivraj Mehta Marg, Paldi, Ahmedabad, Gujarat-380007 | **Phone No.:** 079-26639839/40/43

Name, Address and Phone number of trustee, who submits the audit report:

Ramakantbhai Jhabarmal 1, Ishvarpark, Navrangpura, Ahmedabad-380014 | **Phone No.:** 079-26639839

Details Relating to Bank Account of the Trust: Kotak Mahindra Bank Ltd. | **Current Account No.:** 2811694737

Address: Sanstar House, Paldi, Ahmedabad-380007.

Current Bank Account No. of the Trust for transactions of Foreign Contribution: 40184169707

F.C..R.A. No.: 041910228 | **Date:** 09/06/2000 | **Bank Address:** State Bank of India, FCRA Cell, 4th Floor,
New Delhi Main Branch, 11 Sansad Marg, New Delhi-110001.

	Rs.
Gross Annual Income	Nil
Details of income not chargeable to contribution under section 58 and rule 32	<p>Since the object of the Trust is medical research, therefore, the whole of the income of the Trust is exempt from payment of contribution under Rule 32(1) of the Bombay Public Trusts (Gujarat) Rules, 1961. As the whole of the income of the Trust is exempt from payment of contribution, separate working showing calculation of Gross Annual Income and details of deductions in respect of income not chargeable to contribution under Section 58 and Rule 32 are not given.</p>
(i) Donations received during the year from any source	
(a) Corpus	
(1) From Country	
(2) From Foreign Country; F.C.R.A. No. and Date	
(b) General	
(1) From Country	
(2) From Foreign Country; F.C.R.A. No. and Date : Not Applicable	
(ii) Grants by Government and Local authorities	
(a) Government and Local authorities	
(b) From Foreign Country	
(c) By Funding agencies	
(1) From Country	
(2) From Foreign Country; F.C.R.A. No. and Date : Not Applicable	
(iii) Amount spent for the purpose of education	
(iv) Amount spent for the purpose of medical relief	
(v) (A) Deductions out of income from lands used for agricultural purpose:	
(a) Land Revenue and Local Fund Cess	
(b) Rent payable to superior landlord	
(c) Cost of production, if lands are cultivated by trust.	
(B) Income from lands used for agricultural purpose.	
(vi) (A) Deductions out of income from lands used for nonagricultural purposes	
(a) Assessment, Cesses and other Government or Municipal Taxes	
(b) Ground rent payable to the superior landlord	
(c) Insurance premium.	
(d) Repairs @ 8.33 per cent, of gross rent of building	
(e) Cost of collection @ 4 per cent, of gross rent of buildings let out:	
(B) Income from lands used for non-agricultural purpose.	
(vii) Cost of collection of income or receipt from securities, stocks, etc. at 1 per cent, of such income:	
(viii) Deductions on account of repairs in respect of buildings not rented and yielding to income, @ 8.33 per cent, of the estimated gross annual rent	
Income liable to contribution	Nil

For Dr. Jivraj Mehta Smarak Health Foundation
Bakeri Medical Research Centre
President : Anilbhai Bakeri
Vice President : Achalbhai Bakeri
Managing Trustee : Devanbhai Parikh

Hon Secretaries :
Ramakantbhai Jhabarmal
Kshitishbhai Madandmohan
Sanjaybhai Choksi
Place: Ahmedabad
Date: 10/07/2024

For MODI JAIN & Co.
Chartered Accountants
(Firm Registration No. 139197W)
PRATIK MODI (Partner)
Membership No. 149927
UDIN: 24149927BKFHZF9368

THE GUJARAT PUBLIC TRUSTS ACT, 1950 (BOM. XXIX of 1950) SCHEDULE VIII (VIDE RULE 17(1))
Dr. JIVRAJ MEHTA SMARAK HEALTH FOUNDATION Trust No.: F/951/AHMEDABAD/ 29/11/1983

CONSOLIDATED Balance Sheet as at 31st March, 2024

Current Bank Account No. of the Trust for transactions of Foreign Contribution: 40184169707

F.C.R.A. No.: 041910228 Date: 09/06/2000 Bank Address: State Bank of India, FCRA Cell, 4th Floor, New Delhi-110001.

FUNDS AND LIABILITIES	Sch.	Rs. as at 31/03/2024	Rs. as at 31/03/2023
Trust Funds or Corpus:			
Balance as per last Balance Sheet	A	57,14,17,662	54,94,54,901
Adjustments during the year	A	4,52,46,968	2,19,62,761
		61,66,64,630	57,14,17,662
Other Earmarked Funds:			
(Created under the provisions of the Trust-Deed or Scheme or out of the Income)			
Depreciation Funds	B	33,56,65,191	31,36,00,143
Sinking Fund		-	-
Reserve Fund		-	-
Any Other Fund			
Asset in Kind		70,81,233	11,21,670
CSR Fund		20,74,35,228	12,75,85,228
Non-CSR Fund		1,27,00,000	77,00,000
Group Gratuity Fund		4,07,62,660	4,02,29,215
		60,36,44,312	49,02,36,256
Loans(Secured or Unsecured)			
From Trustee		-	-
From Others		-	-
Liabilities:			
For Expenses	C	3,47,77,417	3,31,87,290
For Advances	D	35,64,574	52,85,901
For Rent and Other Deposits	E	2,74,435	2,34,435
For Sundry Credit Balances		2,52,35,772	1,36,30,167
		6,38,52,198	5,23,37,793
Total Rs.		1,28,41,61,140	1,11,39,91,711

Notes:

- (1) The above Balance Sheet is subject to Significant Accounting Policies and Notes to Financial Statements
- (2) The Above Balance Sheet to the best of our belief contains a true account of the Funds & Liabilities and of the Property and Assets of the Trust.
- (3) Method of Accounting is on Accrual Basis
- (4) There are no investments in concerns in which the Trustees are interested.
- (5) Market Value of Investments as on the date of Balance Sheet is Rs. 22,15,19,403/- (P.Y. 27,10,82,314/-) as per Schedule-F & I.
- (6) Asset in Kind appearing on Property and Asset side includes Rs. 37,82,143/- out of CSR Fund.

Place: Ahmedabad
Date: 10/07/2024

For MODI JAIN & Co.
Chartered Accountants
(Firm Registration No. 139197W)
PRATIK MODI (Partner)
Membership No. 149927
UDIN: 24149927BKFBZF9368

CONSOLIDATED Balance Sheet as at 31st March, 2024

Current Bank Account No. of the Trust for transactions of Foreign Contribution: 40184169707

F.C.R.A. No.: 041910228 Date: 09/06/2000 Bank Address: State Bank of India, FCRA Cell, 4th Floor, New Delhi-110001.

PROPERTY AND ASSETS	Sch.	Rs. as at 31/03/2024	Rs. as at 31/03/2023
Property, Plant and Equipment	B		
Out of Own Funds (At Cost)			
Immovable Properties		26,42,52,809	11,56,08,850
Furniture, Fixtures & Other Assets		32,77,15,838	31,76,67,935
Out of CSR Fund (At Cost)		20,37,57,444	13,31,99,466
Out of Non-CSR Funds (At Cost)		65,00,000	65,00,000
Asset in Kind (At Fair Value)		1,08,63,376	2953813
		81,30,89,467	57,59,30,064
Investments (At Cost)	F	20,26,00,000	25,91,00,000
Loans (Secured or Unsecured)			
Good/ Doubtful		-	-
Loan Scholarship		-	-
Other Loans		-	-
Receivables (Good and Unsecured)		1,33,15,158	1,21,10,386
Inventories	G	91,84,086	1,00,36,274
Advances			
To Trustees		-	-
To Employees		90,050	1,30,680
To Contractors		61,37,291	42,38,925
To Lawyers		-	-
To Others (including Deposits)	H	7,64,83,218	5,90,56,708
		8,27,10,559	6,34,26,313
Income Outstanding			
Rent		-	-
Interest	I	2,27,76,192	1,45,39,231
Other Income	J	64,52,916	45,48,298
		2,92,29,108	1,90,87,529
Cash and Bank Balances (See Note below Schedule-K)	K		
(a) In Current, Saving and Fixed Deposit Accounts		7,93,43,943	10,20,47,822
(b) In F.C.R.A. Savings Account No. 918010005532608 with Axis Bank Ltd.		7,31,239	5,94,809
(c) In F.C.R.A. Current Account No. 40184169707 with State Bank of India		2,14,177	2,14,827
(d) F.C.R.A Fixed Deposit with Axis Bank Ltd.		19,00,000	19,00,000
(e) With the Trustees		-	-
(f) Cash on Hand		7,04,535	9,89,197
		8,28,93,894	10,57,46,655
Income & Expenditure Account			
Balance as per last Balance Sheet.		6,85,54,490	10,24,97,133
Add: Deficit as per Income & Expenditure Account		(1,74,15,622)	(3,39,42,643)
Less: Appropriation, if any		-	-
		5,11,38,868	6,85,54,490
Total Rs.		1,28,41,61,140	1,11,39,91,711

For Dr. Jivraj Mehta Smarak Health Foundation
Bakeri Medical Research Centre
President : Anilbhai Bakeri
Vice President : Achalbhai Bakeri
Managing Trustee : Devanbhai Parikh

Hon Secretaries :
Ramakantbhai Jhabarmal
Kshitishbhai Madandmohan
Sanjaybhai Choksi

Place: Ahmedabad
Date: 10/07/2024

CONSOLIDATED Income & Expenditure Account of the year ended on 31st March, 2024

Current Bank Account No. of the Trust for transactions of Foreign Contribution: 40184169707

F.C.R.A. No.: 041910228 Date: 09/06/2000 Bank Address: State Bank of India, FCRA Cell, 4th Floor, New Delhi-110001.

EXPENDITURE	Sch.	For the year ended on	
		Rs. as at 31/03/2024	Rs. as at 31/03/2023
To Expenditure in respect of properties			
Rates, Taxes, Cesses		-	-
Repairs and Maintenance	L	16,75,402	36,71,706
Salaries		-	-
Insurance		7,43,887	6,28,612
Depreciation/ Amortization	B	1,14,00,693	42,97,813
Other Expenses (Municipal Tax)		5138579	3782891
		1,89,58,561	1,23,81,022
To Establishment Expenses		-	-
To Remuneration (in case of a math)		-	-
To The head of the math, including his household expenditure, if any.		-	-
To Legal and Professional Expenses	M	35,59,735	19,67,150
To Audit Fees		2,00,000	2,00,000
To Contribution and Fees		-	-
To Amounts written off-			
(a) Bad debts		-	-
(b) Loan Scholarships		-	-
(c) Irrecoverable Rents		-	-
(d) Other Items		2,38,118	51,573
		2,38,118	51,573
To Other Expenses	N	47,65,846	56,93,568
To Depreciation/ Amortization	B	1,33,29,738	1,29,98,808
To Amounts transferred to Reserve of Specific Funds		-	-
To Expenditure on objects of the Trust			
(a) Religious		-	-
(b) Educational		-	-
(c) Medical Relief	O	60,68,52,731	50,99,61,221
(d) Relief of Poverty		-	-
(e) Other Charitable objects		-	-
(f) Research Expenses	P	3,69,22,285	2,89,67,543
		64,37,75,016	53,89,28,764
To Surplus carried to Balance Sheet		1,74,15,622	3,39,42,643
Total Rs.		70,22,42,636	60,61,63,528

Notes:

- (1) Method of accounting is on Accrual basis.
- (2) Subject to significant accounting policies and notes to Financial statements.

Place: Ahmedabad
Date: 10/07/2024

For MODI JAIN & Co.
Chartered Accountants
(Firm Registration No. 139197W)
PRATIK MODI (Partner)
Membership No. 149927
UDIN: 24149927BKFHZF9368

THE GUJARAT PUBLIC TRUSTS ACT, 1950 (BOM. XXIX of 1950) SCHEDULE VIII (VIDE RULE 17(1))
Dr. JIVRAJ MEHTA SMARAK HEALTH FOUNDATION Trust No.: F/951/AHMEDABAD/ 29/11/1983

CONSOLIDATED Income & Expenditure Account of the year ended on 31st March, 2024

Current Bank Account No. of the Trust for transactions of Foreign Contribution: 40184169707

F.C.R.A. No.: 041910228 Date: 09/06/2000 Bank Address: State Bank of India, FCRA Cell, 4th Floor, New Delhi-110001.

INCOME	Sch.	For the year ended on	
		Rs. as at 31/03/2024	Rs. as at 31/03/2023
By Income	Q		
Healthcare Income		67,27,34,445	56,07,88,816
Research Project income		24,39,464	46,06,462
		67,51,73,909	56,53,95,278
By Rent (Realized)		-	-
By Interest (Realized)			
On Securities		18,18,234	98,05,584
On Loans			-
On Bank FDR Account		1,77,32,226	1,08,11,495
On Saving Bank Account		12,19,350	22,01,748
		2,07,69,810	2,28,18,827
By Dividend		-	-
By Donations in cash or kind			
Domestic			
CSR Funds (Other than Ongoing Project)		46,20,000	1,51,25,000
Other than CSR Funds		1,32,975	2,00,742
International		-	-
		47,52,975	1,53,25,742
By Grant			-
By Income from Other Sources	R	15,45,942	26,23,681
By Transfer from Reserve		-	-
By Deficit carried to Balance Sheet		-	-
Total Rs.		70,22,42,636	60,61,63,528

For Dr. Jivraj Mehta Smarak Health Foundation
Bakeri Medical Research Centre
President : Anilbhai Bakeri
Vice President : Achalbhai Bakeri
Managing Trustee : Devanbhai Parikh

Hon Secretaries :
Ramakantbhai Jhabarmal
Kshitishbhai Madandmohan
Sanjaybhai Choksi

Place: Ahmedabad
Date: 10/07/2024

RESEARCH UNIT Balance Sheet as at 31st March, 2024

Current Bank Account No. of the Trust for transactions of Foreign Contribution: 40184169707

F.C.R.A. No.: 041910228 Date: 09/06/2000 Bank Address: State Bank of India, FCRA Cell, 4th Floor, New Delhi-110001.

FUNDS AND LIABILITIES	Rs. as at 31/03/2024	Rs. as at 31/03/2023
Trust Funds or Corpus:		
Balance as per last Balance Sheet	56,23,91,184	53,67,40,082
Adjustments during the year	4,74,62,013	2,56,51,102
	60,98,53,197	56,23,91,184
Other Earmarked Funds:		
(Created under the provisions of the Trust-Deed or Scheme or out of the Income)		
Depreciation Funds	32,83,43,297	31,36,00,143
Sinking Fund	-	-
Reserve Fund	-	-
Any Other Fund		
Asset in Kind	70,81,233	11,21,670
CSR Fund	1,50,00,000	1,50,00,000
Non-CSR Fund	77,00,000	77,00,000
Group Gratuity Fund	-	-
	35,81,24,530	33,74,21,813
Loans(Secured or Unsecured)		
From Trustee	-	-
From Others	-	-
Liabilities:		
For Expenses	-	-
For Advances	-	-
For Rent and Other Deposits	-	-
For Sundry Credit Balances	3,545	31,79,518
	3,545	31,79,518
Total Rs.	96,79,81,272	90,29,92,515

Note :

- (1) The above Balance Sheet is subject to Significant Accounting Policies and Notes to Financial Statements
- (2) The Above Balance Sheet to the best of our belief contains a true account of the Funds & Liabilities and of the Property and Assets of the Trust.
- (3) Method of Accounting is on Accrual Basis.
- (4) There are no investments in concerns in which the Trustees are interested.
- (5) Market Value of Investments as on the date of Balance Sheet is Rs. NIL (P.Y. - 3,23,13,941/-)

Place: Ahmedabad
Date: 10/07/2024

For MODI JAIN & Co.
Chartered Accountants
(Firm Registration No. 139197W)
PRATIK MODI (Partner)
Membership No. 149927
UDIN: 24149927BKFHZF9368

RESEARCH UNIT Balance Sheet as at 31st March, 2024

Current Bank Account No. of the Trust for transactions of Foreign Contribution: 40184169707

F.C.R.A. No.: 041910228 Date: 09/06/2000 Bank Address: State Bank of India, FCRA Cell, 4th Floor, New Delhi-110001.

PROPERTY AND ASSETS	Rs. as at 31/03/2024	Rs. as at 31/03/2023
Property, Plant and Equipment		
Out of Own Funds (At Cost)		
Immovable Properties	11,78,14,926	11,56,08,850
Furniture, Fixtures & Other Assets	32,77,15,838	31,76,67,935
Out of CSR Fund (At Cost)	2,64,05,956	1,73,30,616
Out of Non-CSR Funds (At Cost)	65,00,000	65,00,000
Asset in Kind (At Fair Value)	70,81,233	11,21,670
	48,55,17,953	45,82,29,071
Investments (At Cost)	-	3,00,00,000
Loans (Secured or Unsecured)		
Good/ Doubtful	-	-
Loan Scholarship	-	-
Other Loans	-	-
Receivables (Good and Unsecured)	3,96,013	9,10,333
Inventories	-	-
Advances		
To Trustees	-	-
To Employees	-	-
To Contractors	61,37,291	42,38,925
To Lawyers	-	-
To Others (including Deposits)	7,96,940	5,14,434
	69,34,231	47,53,359
Current Account of Trust's Inter-Units	22,03,25,289	17,41,80,221
Income Outstanding		
Rent	-	-
Interest	25,97,782	39,70,212
Other Income	-	-
	25,97,782	39,70,212
Cash and Bank Balances		
(a) In Current, Saving and Fixed Deposit Accounts	1,37,19,032	3,08,09,542
(b) In F.C.R.A. Savings Account No. 918010005532608 with Axis Bank Ltd.	7,31,239	5,94,809
(c) In F.C.R.A. Current Account No. 40184169707 with State Bank of India	2,14,177	2,14,827
(d) F.C.R.A Fixed Deposit with Axis Bank Ltd.	19,00,000	19,00,000
(e) With the Trustees	-	-
(f) Cash on Hand	1,000	1,000
	1,65,65,448	3,35,20,178
Income & Expenditure Account		
Balance as per last Balance Sheet.	19,74,29,141	17,21,39,280
Add: Deficit as per Income & Expenditure Account	3,82,15,415	2,52,89,861
Less: Appropriation, if any	-	-
	23,56,44,556	19,74,29,141
Total Rs.	96,79,81,272	90,29,92,515

For Dr. Jivraj Mehta Smarak Health Foundation
Bakeri Medical Research Centre
President : Anilbhai Bakeri
Vice President : Achalbhai Bakeri
Managing Trustee : Devanbhai Parikh

Hon Secretaries :
Ramakantbhai Jhabarmal
Kshitishbhai Madandmohan
Sanjaybhai Choksi

Place: Ahmedabad
Date: 10/07/2024

THE GUJARAT PUBLIC TRUSTS ACT, 1950 (BOM. XXIX of 1950) SCHEDULE VIII (VIDE RULE 17(1))
Dr. JIVRAJ MEHTA SMARAK HEALTH FOUNDATION Trust No.: F/951/AHMEDABAD/ 29/11/1983

RESEARCH UNIT Income & Expenditure Account for the year ended on 31st March, 2024

Current Bank Account No. of the Trust for transactions of Foreign Contribution: 40184169707

F.C.R.A. No.: 041910228 Date: 09/06/2000 Bank Address: State Bank of India, FCRA Cell, 4th Floor, New Delhi-110001.

EXPENDITURE	For the year ended on	
	Rs. as at 31/03/2024	Rs. as at 31/03/2023
To Expenditure in respect of properties		
Rates, Taxes, Cesses	-	-
Repairs and Maintenance	5,02,622	11,01,511
Salaries	-	-
Insurance	2,52,126	1,88,583
Depreciation/ Amortization	12,23,640	12,89,344
Other Expenses	-	-
	19,78,388	25,79,438
To Establishment Expenses	-	-
To Remuneration (in case of a math)	-	-
To The head of the math, including his household expenditure, if any.	-	-
To Legal and Professional Expenses	-	-
To Audit Fees	-	-
To Contribution and Fees	-	-
To Amounts written off-		
(a) Bad debts	-	-
(b) Loan Scholarships	-	-
(c) Irrecoverable Rents	-	-
(d) Other Items	1,53,702	-
	1,53,702	-
To Other Expenses	26,08,832	24,63,750
To Depreciation/ Amortization	39,98,921	38,99,642
To Amounts transferred to Reserve of Specific Funds	-	-
To Expenditure on objects of the Trust		
(a) Religious	-	-
(b) Educational	-	-
(c) Medical Relief	-	-
(d) Relief of Poverty	-	-
(e) Other Charitable objects	-	-
(f) Research Expenses	3,69,22,285	2,89,67,543
(g) CSR Activities	-	-
	3,69,22,285	2,89,67,543
Total Rs.	4,56,62,128	3,79,10,373

Notes:

- (1) Method of Accounting is on Accrual basis.
- (2) Subject to Significant Accounting Policies and Notes to Financial Statements

For MODI JAIN & Co.
Chartered Accountants
(Firm Registration No. 139197W)
PRATIK MODI (Partner)
Membership No. 149927
UDIN: 24149927BKFHZF9368

Place: Ahmedabad
Date: 10/07/2024

THE GUJARAT PUBLIC TRUSTS ACT, 1950 (BOM. XXIX of 1950) SCHEDULE VIII (VIDE RULE 17(1))
Dr. JIVRAJ MEHTA SMARAK HEALTH FOUNDATION Trust No.: F/951/AHMEDABAD/ 29/11/1983

RESEARCH UNIT Income & Expenditure Account for the year ended on 31st March, 2024

Current Bank Account No. of the Trust for transactions of Foreign Contribution: 40184169707

F.C.R.A. No.: 041910228 Date: 09/06/2000 Bank Address: State Bank of India, FCRA Cell, 4th Floor, New Delhi-110001.

INCOME	For the year ended on	
	Rs. as at 31/03/2024	Rs. as at 31/03/2023
By Income		
Research Project Income	24,39,464	46,06,462
By Rent (Realized)	-	-
By Interest (Realized)		
On Securities	3,49,360	29,69,418
On Loans	-	-
On Bank FDR Account	34,19,109	31,70,165
On Saving Bank Account	1,23,367	1,13,548
	38,91,836	62,53,131
By Dividend	-	-
By Donations in cash or kind		
Domestic		
CSR Funds	-	-
Other than CSR Funds	-	-
International	-	-
By Grant	-	-
By Income from Other Sources	11,15,413	17,60,919
By Transfer from Reserve	-	-
By Deficit carried to Balance Sheet	3,82,15,415	2,52,89,861
Total Rs.	4,56,62,128	3,79,10,373

For Dr. Jivraj Mehta Smarak Health Foundation
Bakeri Medical Research Centre
President : Anilbhai Bakeri
Vice President : Achalbhai Bakeri
Managing Trustee : Devanbhai Parikh

Hon Secretaries :
Ramakantbhai Jhabarmal
Kshitishbhai Madandmohan
Sanjaybhai Choksi

Place: Ahmedabad
Date: 10/07/2024

THE GUJARAT PUBLIC TRUSTS ACT, 1950 (BOM. XXIX of 1950) SCHEDULE VIII (VIDE RULE 17(1))
Dr. JIVRAJ MEHTA SMARAK HEALTH FOUNDATION Trust No.: F/951/AHMEDABAD/ 29/11/1983

HEALTHCARE UNIT Balance Sheet as at 31st March, 2024

Current Bank Account No. of the Trust for transactions of Foreign Contribution: 40184169707

F.C.R.A. No.: 041910228 Date: 09/06/2000 Bank Address: State Bank of India, FCRA Cell, 4th Floor, New Delhi-110001.

FUNDS AND LIABILITIES	Rs. as at 31/03/2024	Rs. as at 31/03/2023
Trust Funds or Corpus:		
Balance as per last Balance Sheet	90,26,478	1,27,14,819
Adjustments during the year	(22,15,045)	(36,88,341)
	68,11,433	90,26,478
Other Earmarked Funds:		
(Created under the provisions of the Trust-Deed or Scheme or out of the Income)		
Depreciation Funds	73,21,894	-
Sinking Fund	-	-
Reserve Fund	-	-
Any Other Fund		
Asset in Kind	-	-
CSR Fund	19,24,35,228	11,25,85,228
Non-CSR Fund	50,00,000	-
Group Gratuity Fund	4,07,62,660	4,02,29,215
	24,55,19,782	15,28,14,443
Loans(Secured or Unsecured)		
From Trustee	-	-
From Others	-	-
Liabilities:		
For Expenses	3,47,77,417	3,31,87,290
For Advances	35,64,574	52,85,901
For Rent and Other Deposits	2,74,435	2,34,435
For Sundry Credit Balances	2,52,32,227	1,04,50,649
	6,38,48,653	4,91,58,275
Current Account of Trust's Inter-Units	22,03,25,289	17,41,80,221
Income & Expenditure Account		
Balance as per last Balance Sheet.	12,88,74,651	6,96,42,147
Add/(Less): Surplus/ (Deficit) as per Income & Expenditure Account	5,56,31,037	5,92,32,504
	18,45,05,688	12,88,74,651
Total Rs.	72,10,10,845	51,40,54,068

Notes:

- (1) The above Balance Sheet is subject to Significant Accounting Policies and Notes to Financial Statements
- (2) The Above Balance Sheet to the best of our belief contains a true account of the Funds & Liabilities and of the Property and Assets of the Trust.
- (3) Method of Accounting is on Accrual Basis.
- (4) There are no investments in concerns in which the Trustees are interested.
- (5) Market Value of Investments as on the date of Balance Sheet is Rs. 22,15,19,403/- (P.Y. - 23,87,68,373/-)
- (6) Asset in Kind appearing on Property and Asset side includes Rs. 37,82,143/- out of CSR Fund.

THE GUJARAT PUBLIC TRUSTS ACT, 1950 (BOM. XXIX of 1950) SCHEDULE VIII (VIDE RULE 17(1))
Dr. JIVRAJ MEHTA SMARAK HEALTH FOUNDATION Trust No.: F/951/AHMEDABAD/ 29/11/1983

HEALTHCARE UNIT Balance Sheet as at 31st March, 2024

Current Bank Account No. of the Trust for transactions of Foreign Contribution: 40184169707

F.C.R.A. No.: 041910228 **Date:** 09/06/2000 **Bank Address:** State Bank of India, FCRA Cell, 4th Floor, New Delhi-110001.

PROPERTY AND ASSETS	Rs. as at 31/03/2024	Rs. as at 31/03/2023
Property, Plant and Equipment		
Out of Own Funds (At Cost)		
Immovable Properties	14,64,37,883	-
Furniture, Fixtures & Other Assets	-	-
Out of CSR Fund (At Cost)	17,73,51,488	11,58,68,850
Out of Non-CSR Funds	-	-
Asset in Kind (At Fair Value)	37,82,143	18,32,143
	32,75,71,514	11,77,00,993
Investments (At Cost)	20,26,00,000	22,91,00,000
Loans (Secured or Unsecured)		
Good/ Doubtful	-	-
Loan Scholarship	-	-
Other Loans	-	-
Receivables (Good and Unsecured)	1,29,19,145	1,12,00,053
Inventories	91,84,086	1,00,36,274
Advances		
To Trustees	-	-
To Employees	90,050	1,30,680
To Contractors		
To Lawyers	-	-
To Others (including Deposits)	7,56,86,278	5,85,42,274
	7,57,76,328	5,86,72,954
Income Outstanding		
Rent	-	-
Interest	2,01,78,410	1,05,69,019
Other Income	64,52,916	45,48,298
	2,66,31,326	1,51,17,317
Cash and Bank Balances		
(a) In Current, Saving and Fixed Deposit Accounts	6,56,24,911	7,12,38,280
(b) With the Trustees	-	-
(c) Cash on Hand	7,03,535	9,88,197
	6,63,28,446	7,22,26,477
	-	-
Total Rs.	72,10,10,845	51,40,54,068

For Dr. Jivraj Mehta Smarak Health Foundation
Bakeri Medical Research Centre
President : Anilbhai Bakeri
Vice President : Achalbhai Bakeri
Managing Trustee : Devanbhai Parikh

Hon Secretaries :
Ramakantbhai Jhabarmal
Kshitishbhai Madandmohan
Sanjaybhai Choksi

Place: Ahmedabad
Date: 10/07/2024

THE GUJARAT PUBLIC TRUSTS ACT, 1950 (BOM. XXIX of 1950) SCHEDULE VIII (VIDE RULE 17(1))
Dr. JIVRAJ MEHTA SMARAK HEALTH FOUNDATION Trust No.: F/951/AHMEDABAD/ 29/11/1983

HEALTHCARE UNIT Income and Expenditure Account for the Year ended on 31st March, 2024

Current Bank Account No. of the Trust for transactions of Foreign Contribution: 40184169707

F.C.R.A. No.: 041910228 Date: 09/06/2000 Bank Address: State Bank of India, FCRA Cell, 4th Floor, New Delhi-110001.

EXPENDITURE	For the year ended on	
	Rs. as at 31/03/2024	Rs. as at 31/03/2023
To Expenditure in respect of properties		
Rates, Taxes, Cesses	-	-
Repairs and Maintenance	11,72,780	25,70,195
Salaries	-	-
Insurance	4,91,761	4,40,029
Depreciation/ Amortization	1,01,77,053	30,08,469
Other Expenses (Municipal Tax)	51,38,579	37,82,891
	1,69,80,173	98,01,584
To Establishment Expenses	-	-
To Remuneration (in case of a math)	-	-
To the head of Math including his household expenditure, if any	-	-
To Legal and Professional Expenses	35,59,735	19,67,150
To Audit Fees	2,00,000	2,00,000
To Contribution and Fees	-	-
To Amounts written off-		
(a) Bad debts	-	-
(b) Loan Scholarships	-	-
(c) Irrecoverable Rents	-	-
(d) Other Items	84,416	51,573
	84,416	51,573
To Other Expenses	21,57,014	32,29,818
To Depreciation/ Amortization	93,30,817	90,99,166
To Amounts transferred to Reserve of Specific Funds	-	-
To Expenditure on objects of the Trust		
(a) Religious	-	-
(b) Educational	-	-
(c) Medical Relief	60,68,52,731	50,99,61,221
(d) Relief of Poverty	-	-
(e) Other Charitable objects	-	-
(f) Research Expenses	-	-
	60,68,52,731	50,99,61,221
To Surplus carried to Balance Sheet	5,56,31,037	5,92,32,504
Total Rs.	69,47,95,923	59,35,43,016

Notes:

- (1) Method of accounting is on accrual basis.
- (2) Subject to significant accounting policies and notes to Financial statements.

For MODI JAIN & Co.
Chartered Accountants
(Firm Registration No. 139197W)
PRATIK MODI (Partner)
Membership No. 149927
UDIN: 24149927BKFBZF9368

Place: Ahmedabad
Date: 10/07/2024

THE GUJARAT PUBLIC TRUSTS ACT, 1950 (BOM. XXIX of 1950) SCHEDULE VIII (VIDE RULE 17(1))
Dr. JIVRAJ MEHTA SMARAK HEALTH FOUNDATION Trust No.: F/951/AHMEDABAD/ 29/11/1983

HEALTHCARE UNIT Income and Expenditure Account for the Year ended on 31st March, 2024

Current Bank Account No. of the Trust for transactions of Foreign Contribution: 40184169707

F.C.R.A. No.: 041910228 Date: 09/06/2000 Bank Address: State Bank of India, FCRA Cell, 4th Floor, New Delhi-110001.

INCOME	For the year ended on	
	Rs. as at 31/03/2024	Rs. as at 31/03/2023
By Income		
Healthcare income	67,27,34,445	56,07,88,816
By Rent (Realized)	-	-
By Interest (Realized)		
On Securities	14,68,874	68,36,166
On Loans	-	-
On Bank FDR Account	1,43,13,117	76,41,330
On Saving Bank Account	10,95,983	20,88,200
	1,68,77,974	1,65,65,696
By Dividend	-	-
By Donations in cash or kind		
Domestic		
CSR Funds	46,20,000	1,51,25,000
Other than CSR Funds	1,32,975	2,00,742
International	-	-
	47,52,975	1,53,25,742
By Grant	-	-
By Income from Other Sources	4,30,529	8,62,762
By Transfer from Reserve	-	-
Total Rs.	69,47,95,923	59,35,43,016

For Dr. Jivraj Mehta Smarak Health Foundation
Bakeri Medical Research Centre
President : Anilbhai Bakeri
Vice President : Achalbhai Bakeri
Managing Trustee : Devanbhai Parikh

Hon Secretaries :
Ramakantbhai Jhabarmal
Kshitishbhai Madandmohan
Sanjaybhai Choksi

Place: Ahmedabad
Date: 10/07/2024

SIGNIFICANT ACCOUNTING POLICIES AND NOTES TO FINANCIAL STATEMENTS FOR THE YEAR ENDED ON 31.03.2024

1. TRUST INFORMATION AND REGISTRATIONS UNDER VARIOUS STATUTES :

- a. Dr. Jivraj Mehta Smarak Health Foundation was registered under the Bombay Public Trusts Act, 1950 on 29.11.1983 having Registration No. F/951/Ahmedabad.
- b. The Foundation has also been registered under various Statutes, as per the following details:

SNo.	Section and Sub-Section of the Statute	Date of approval of Registration/ Renewal of Registration	Unique Registration No.	Valid upto
1	Sub clause (i) of Clause (ac) of sub-section (1) of Section 12A of the Income Tax Act.	23.09.2021	AAATD1124CE20012	From AY 2022-23 to AY 2026-27
2	Clause (i) of First Proviso to sub-section (5) of Section 80G of the Income Tax Act	23.09.2021	AAATD1124CF20218	From AY 2022-23 to AY 2026-27
3	Clause (ii) of sub-section (1) of Section 35 of the Income Tax Act	Applied on 25.03.2022 for approval in the category of "Other Institution" partly engaged in research activities.	-	Application is pending with Income Tax Department.
4	Renewal of Recognition of Scientific and Industrial Research Organisation (SIROs), Ministry of Science and Technology, Govt. of India, New Delhi	22-04-2024	F.No.14/127/1989-TU-V	01.04.2024 to 31.03.2027
5	Renewal of Registration u/s. 16 of the Foreign Contribution (Regulation) Act, 2010, Ministry of Home Affairs (MHA), Govt. of India, New Delhi	01-10-2022.	041910228	01.10.2022 to 30.09.2027
6	Registration for undertaking CSR activities, issued by the Ministry of Corporate Affairs, Govt. of India, New Delhi.	22.04.2021	Registration No.00003117	-

2. As required under the Statute, the Foundation has maintained separate set of books of account for Research and Healthcare units, which are separately audited. Accordingly, along with consolidated financial statements, separate financial statements of Research and Healthcare units are presented herewith.

3. METHOD OF ACCOUNTING :

Method of Accounting is on Accrual Basis.

4. USES OF ESTIMATES :

The Preparation of financial statements in conformity with generally accepted accounting principles requires management to make estimates and assumptions that affect the reported balances of assets and liabilities and the disclosure relating to contingent liabilities as at the date of financial statements and reported amounts of income and expenses during the reporting period. Although these estimates are based upon management's best knowledge of current events and actions, actual results could differ from those estimates. Estimates and underlying assumptions are reviewed at each Balance Sheet date. Any revision to accounting estimates is recognized in the period in which the estimate is revised.

5. PROPERTY, PLANT AND EQUIPMENT (PPE) AND DEPRECIATION :

- a. **Property, Plant & Equipment** PPE (other than the PPE received as Donation in Kind) are stated at their historical cost of acquisition and/or construction. The cost comprises the purchase price, including imports duties and non-refundable purchase taxes and such costs directly attributable to bringing the asset to the location and condition necessary for it to be capable of operating in the manner intended by management. The PPE received as Donation in kind are stated at their fair market value on the date of receipt.

(Please refer to Note No. 7 here in below in respect of Assets in Kind.)

- b. **Depreciation/ Amortisation:** Depreciation on PPE has been provided on written down value (WDV) method at the rates prescribed under the Income Tax Rules, 1962.
- c. Lease Hold Land is amortised over the period of lease term i.e. 99 years.
- d. Method of Accounting of PPE and depreciation thereon as mentioned in (a) and (b) above are subject to the method of accounting followed in respect of PPE acquired out of CSR funds which is explained in Note No. 6 below.

6. CSR FUNDS, PROPERTY, PLANT AND EQUIPMENT (PPE) AND DEPRECIATION :

- a. The Trust has been registered for undertaking CSR activities as the Implementing Agency for the specified companies which are under CSR obligations as per the provisions of Section 135, Schedule VII and the Companies (CSR Policy) Rules, 2014 (as amended), under the Companies Act, 2013. These companies have given CSR donations to the Trust for Ongoing Projects and for Other than Ongoing Projects for creating PPE (medical equipments etc.) and for utilisation on the objects of the Trust.

The accounting policy in regard to measurement, recognition and disclosure of such different CSR funds are as under:

- b. CSR Funds for Ongoing Projects and for Other than Ongoing Projects for creating PPE are shown as
- Earmarked Funds in the Balance Sheet and funds for utilisation on the objects of the Trust are recognised as Revenue Donations in the Income and Expenditure Account.
 - Property, Plant and Equipment created out of CSR Funds where the ownership has been passed on to the Trust have been separately recognised and disclosed in the Schedule of Property, Plant and Equipment. (Schedule-B).
 - PPE created out of CSR Funds for the Hospital has been measured and recognised in the Financial Statements of Healthcare Unit.
 - No Depreciation has been provided in the books of account in respect of such PPE created out of CSR Funds (either shown in the Financial Statements of Research Unit or Healthcare Unit).

7. ASSETS IN KIND :

Any PPE received by the Trust in kind where the ownership has been passed on to the Trust has been valued at Fair Value on the date of receipt. No depreciation has been provided in the books of account on such PPE received in kind.

8. REVENUE RECOGNITION :

- a. Revenue is recognised when consideration can be measured reliably and there exists reasonable certainty of its recovery.
- b. Healthcare Income is recognised as and when services are rendered which normally coincides when invoices are raised.
- c. Pharmacy Income is recognised as and when the medicines are sold to the patients
- d. Interest Income is recognised on time proportion basis.

9. INVESTMENTS :

Investments are stated at the cost price.

10. INVENTORIES :

Inventory of Drugs, Medicines and other consumables are valued at cost (FIFO Method), as taken, valued and certified by the management.

11. Common expenses including depreciation/ amortisation (other than directly attributable to any specific unit) are allocated/ apportioned between Healthcare Unit and Research Unit in the ratio of 70:30 respectively.

12. In the opinion of the management, the current assets and loans and advances are approximately of the value stated, if realized in the ordinary course of the Trust's activities and all known liabilities have been fully provided for in the books of account unless otherwise stated.

13. Outstanding balances as on 31st March, 2024 in respect of Sundry Credit balances, Other Liabilities, Receivables, Advances and Deposits given are subject to confirmation, reconciliation and adjustments, if any.

14. The Foundation has not received any Registration certificates from its suppliers categorised as micro and small enterprises as defined under the Micro, Small and Medium Enterprises Development Act, 2006. Hence, the required disclosures in this regard as per the said Act has not been made.

15. Previous year's figures have been regrouped, re-arranged or re-classified wherever necessary to make them comparable with the current year's figures.

SCHEDULE A - TRUST FUND

PARTICULARS	Rs. as at 31/03/2024	Rs. as at 31/03/2023
(A) Ratubhai Adani Poor Patient Relief Fund		
Opening Balance	90,26,478	1,27,14,819
Add: Received during the year	2,22,37,651	1,21,39,000
Less: Relief Given to Poor during the year	(2,44,52,696)	(1,58,27,341)
Closing Balance	68,11,433	90,26,478
(B) CSR Donation for Poor Patient Relief Fund		
Opening Balance	-	-
Add: Received during the year	-	2,00,000
Less: Relief Given to Poor during the year	-	(2,00,000)
Closing Balance	-	-
(C) Trust Fund u/s 35(1)(ii)		
Opening Balance	56,23,91,184	53,67,40,082
Add: Addition during the year	4,74,62,013	2,56,51,102
Less: Deduction during the year	-	-
Closing Balance	60,98,53,197	56,23,91,184
Total Rs. (A+B+C)	61,66,64,630	57,14,17,662

For Dr. Jivraj Mehta Smarak Health Foundation
 Bakeri Medical Research Centre
 President : Anilbhai Bakeri
 Vice President : Achalbhai Bakeri
 Managing Trustee : Devanbhai Parikh

Hon Secretaries :
 Ramakantbhai Jhabarmal
 Kshitishbhai Madandmohan
 Sanjaybhai Choksi

Place: Ahmedabad
 Date: 10/07/2024

SCHEDULE B - PROPERTY, PLANT AND EQUIPMENT (CONSOLIDATED)

PARTICULARS	Rate	Gross Block			Depreciation/ Amortization			Net Block		
		Balance as on 01/04/2023	Addition upto 30/09/2023	Deduction/ Transfer	Balance as on 31/03/2024	Addition upto 30/09/2023	Deduction (Accumu Depre)	Balance as on 31/03/2024	Balance as on 31/03/2023	
(A) OUT OF OWN FUNDS										
Lease Hold Land	-	2,50,000	-	-	2,50,000	85,850	-	88,375	1,64,150	
Research Centre Bldg.	10%	10,78,51,190	19,88,670	-	10,98,39,860	7,32,30,015	-	7,68,81,000	3,46,21,175	
Other Building	10%	8,42,000	-	-	8,42,000	7,73,711	6,629	-	7,80,540	68,289
Road	10%	36,44,660	1,74,330	-	38,18,990	18,81,014	1,93,798	-	20,74,812	17,43,646
Lift	15%	30,21,000	43,076	-	30,64,076	16,32,993	2,14,662	-	18,47,655	13,88,007
Total (All)		11,56,08,850	22,06,076	-	11,78,14,926	7,76,03,563	40,78,798	-	8,16,82,382	3,80,05,267
Previous Year (All)		11,56,08,850	-	-	11,56,08,850	7,33,05,770	42,57,813	-	7,76,03,563	3,80,05,267
Dead Stock & Furniture	10%	2,99,63,448	5,73,450	1,33,880	3,08,70,778	1,89,31,374	11,60,562	6,694	2,00,88,620	1,10,32,074
Medical Equipment	15%	23,82,34,852	24,01,290	64,94,754	24,51,82,996	17,71,81,530	92,25,992	4,87,107	18,52,66,744	5,99,16,152
Office Equipment	15%	2,40,61,933	8,17,727	9,48,647	2,44,38,033	1,72,20,037	10,21,646	38,027	8,88,774	1,72,90,938
Generator	15%	36,25,034	-	2,18,898	34,06,136	27,87,735	92,757	-	1,48,724	6,74,748
Sound System	15%	253,028	-	-	253,028	1,99,611	8,013	-	2,07,624	45,404
Vehicles	15%	17,41,184	94,539	-	18,35,713	10,76,114	11,3,940	-	11,90,054	6,45,559
Computer	40%	1,83,75,956	18,01,374	3,36,424	2,05,13,754	1,76,13,644	10,53,474	67,285	1,87,06,403	18,07,351
Computer - Software	25%	14,15,520	-	-	14,15,520	10,66,515	82,251	-	11,68,766	246,754
Total (All)		31,76,67,935	56,88,370	31,12,545	32,71,15,838	23,59,96,560	1,77,30,625	5,99,113	26,65,383	8,16,71,375
Previous Year (All)		30,58,79,555	1,08,294	3,82,737	31,76,67,935	22,33,69,505	1,20,68,687	9,30,121	23,59,86,580	8,25,10,080
(B) OUT OF CSR FUNDS										
Building	-	-	-	-	5,86,739	-	-	-	5,86,739	-
Dead Stock & Furniture	-	-	-	-	2,40,96,702	-	-	-	2,40,96,702	-
Medical Equipment	-	-	-	-	3,34,920	-	-	-	3,34,920	-
Office Equipment	-	-	-	-	13,87,585	-	-	-	13,87,585	-
Holistic Project (Capita WIP)	-	1,73,30,616	47,24,965	2,64,05,956	-	-	-	-	-	1,73,30,616
Total (B)		1,73,30,616	47,24,965	3,07,56,331	2,64,05,956	-	-	-	2,64,05,956	1,73,30,616
Previous Year (B)		-	95,71,743	77,56,873	1,73,30,616	-	-	-	1,73,30,616	-
(C) OUT OF NON-CSR FUNDS										
Medical Equipment	-	65,00,000	-	-	65,00,000	-	-	-	65,00,000	65,00,000
Total (C)		65,00,000	-	-	65,00,000	-	-	-	65,00,000	65,00,000
Previous Year (C)		65,00,000	-	-	65,00,000	-	-	-	65,00,000	65,00,000
(D) ASSET IN KIND										
Medical Equipment	-	-	-	-	59,59,563	-	-	-	59,59,563	-
Oxygen Concentrators	-	11,21,670	-	-	11,21,670	-	-	-	11,21,670	11,21,670
Total (D)		11,21,670	-	-	59,59,563	70,81,233	-	-	70,81,233	11,21,670
Previous Year (D)		11,21,670	-	-	11,21,670	-	-	-	11,21,670	11,21,670
Total - (I)		46,82,29,071	1,26,19,411	4,41,87,972	48,55,17,953	31,36,00,143	1,46,09,424	5,99,113	32,83,43,297	14,46,28,828
Previous Year - (I)		42,91,10,075	96,82,037	3,82,737	46,82,29,071	29,66,76,275	1,63,66,500	9,30,121	31,36,00,143	14,46,28,828
(Amount in Rs.)										

Note: (I) No depreciation is provided on Property, Plant and Equipment mentioned from (B) to (D) above as the cost to the Trust is NIL with effect from F.Y. 2021-22 onwards.
 (2) GST Credit amounting to Rs. 1,16,78,251/- on purchase of Property, Plant and Equipment (PPE) from FY 2017-18 to FY 2023-24 which was taken credit of, but to be reversed over a period of respective five years, has been paid and charged to respective PPE during the year.

SCHEDULE B – PROPERTY, PLANT AND EQUIPMENT (HEALTHCARE)

PARTICULARS	Rate	Gross Block					Depreciation/ Amortization					Net Block	
	%	Balance as on 01/04/2023	Addition upto 30/09/2023	Addition after 30/09/2023	Deduction/Transfer	Balance as on 31/03/2024	Balance as on 01/04/2024	Addition upto 30/09/2023	Addition after 30/09/2023	Deduction (Accumu Depre)	Balance as on 31/03/2024	Balance as on 31/03/2023	
(II) HEALTHCARE													
(A) OUT OF OWN FUNDS													
Building	10%	-	-	-	-	14,64,37,883	-	-	73,21,894	-	73,21,894	13,91,15,989	-
Total (A)		-	-	-	-	14,64,37,883	-	-	73,21,894	-	73,21,894	13,91,15,989	-
Previous Year (A)													
(B) OUT OF CSR FUNDS													
Building	-	-	-	-	-	10,16,91,753	-	-	-	-	-	10,16,91,753	-
Computer	-	-	-	-	-	25,70,598	-	-	-	-	-	25,70,598	-
Dead Stock & Furniture	-	-	-	-	-	3,05,18,007	-	-	-	-	-	3,05,18,007	-
Medical Equipment	-	1,51,25,227	-	-	-	1,84,60,845	-	-	-	-	-	3,35,86,072	1,51,25,227
Office Equipment	-	-	-	-	-	89,85,058	-	-	-	-	-	89,85,058	-
Holistic Project (Capital WIP)	-	10,07,43,623	1,06,28,842	5,08,53,796	16,22,26,261	-	-	-	-	-	-	10,07,43,623	-
Total (B)		11,58,68,850	1,06,28,842	21,30,80,057	16,22,26,261	17,73,51,488	-	-	-	-	17,73,51,488	11,58,68,850	-
Previous Year (B)		2,19,62,810	69,18,677	8,69,87,363	-	11,58,68,850	-	-	-	-	11,58,68,850	2,19,62,810	-
(C) ASSET IN KIND													
Medical Equipment	-	18,32,143	-	19,50,000	-	37,82,143	-	-	-	-	37,82,143	18,32,143	-
Total (D)		18,32,143	-	19,50,000	-	37,82,143	-	-	-	-	37,82,143	18,32,143	-
Previous Year (D)		18,32,143	-	-	-	18,32,143	-	-	-	-	18,32,143	18,32,143	-
Total - (II)		11,77,00,993	1,06,28,842	36,14,67,940	16,22,26,261	32,75,71,514	-	-	73,21,894	-	73,21,894	32,02,49,620	11,77,00,993
Previous Year - (II)		2,37,94,953	69,18,677	8,69,87,363	-	11,77,00,993	-	-	-	-	11,77,00,993	2,37,94,953	-
Total (I+II)		57,59,30,064	2,32,48,253	40,56,55,912	19,17,44,762	81,30,89,467	31,36,00,143	1,68,09,424	79,21,007	26,65,383	47,74,24,276	26,23,29,921	-
Previous Year (I+II)		45,29,05,028	1,66,00,714	10,68,07,059	3,82,737	57,59,30,064	29,66,75,275	1,63,66,500	9,30,121	3,71,753	26,23,29,921	15,62,29,753	-
(Amount in Rs.)													

Note: (I) No depreciation is provided on Property, Plant and Equipment mentioned in (B) and (C) above as the cost to the Trust is NIL with effect from F.Y. 2021-22 onwards.

SCHEDULE C - LIABILITIES (FOR EXPENSES)

PARTICULARS	Rs. as at 31/03/2024	Rs. as at 31/03/2023
Creditors for Expenses	7,00,439	20,91,515
Provision for Expenses	3,40,76,978	3,10,95,775
Total Rs.	3,47,77,417	3,31,87,290

SCHEDULE D - LIABILITIES (FOR ADVANCES)

PARTICULARS	Rs. as at 31/03/2024	Rs. as at 31/03/2023
IP Advance	29,38,466	44,80,446
OP Advance	2,06,108	3,85,455
Patient Deposit (Cadever)	4,20,000	4,20,000
Total Rs.	35,64,574	52,85,901

SCHEDULE E - LIABILITIES (FOR RENT & OTHER DEPOSITS)

PARTICULARS	Rs. as at 31/03/2024	Rs. as at 31/03/2023
Diabetic Life Membership	14,435	14,435
Jagannath Food Services (Deposit)	1,50,000	1,50,000
Staff (Deposit)	60,000	70,000
Security Deposit	50,000	-
Total Rs.	2,74,435	2,34,435

SCHEDULE F - INVESTMENTS (AT COST)

PARTICULARS	Rs. as at 31/03/2024	Rs. as at 31/03/2023
8% Govt. of India Savings (Taxable) Bonds-2003 issued by HDFC Bank Ltd.	-	6,75,00,000
Investment in Fixed Deposit with ICICI Home Finance Ltd.	-	50,00,000
Investment in Fixed Deposit with PNB Housing Finance Limited	5,00,00,000	6,50,00,000
Investment in Fixed Deposit with Kotak Bank Limited	5,10,00,000	2,00,00,000
Investment in Fixed Deposit with Yes Bank Limited	10,16,00,000	10,16,00,000
Total Rs.	20,26,00,000	25,91,00,000

SCHEDULE G - INVENTORIES (AT COST) (AS TAKEN, VALUED AND CERTIFIED BY THE MANAGEMENT)

PARTICULARS	Rs. as at 31/03/2024	Rs. as at 31/03/2023
Cathlab Stock	11,46,406	17,35,673
Laboratory Chemical Stock	6,92,860	5,78,567
Linen Stock	5,15,707	3,23,821
Medicine Stock	64,97,276	70,16,279
Misc. Item Stock	1,20,452	54,782
Stationery & Printing Stock	2,11,385	3,27,152
Total Rs.	91,84,086	1,00,36,274

SCHEDULE H - ADVANCES TO OTHERS INCLUDING DEPOSITS

PARTICULARS	Rs. as at 31/03/2024	Rs. as at 31/03/2023
Deposits	33,82,996	16,74,139
Duties & Taxes	8,07,548	14,80,328
LIC Gratuity Fund Investment	4,07,62,660	4,02,29,215
Other Sundry Balances	19,07,990	18,26,037
TDS/TCS Receivable	2,96,22,024	1,38,46,989
Total Rs.	7,64,83,218	5,90,56,708

SCHEDULE I - INCOME OUTSTANDING (INTEREST)

PARTICULARS	Rs. as at 31/03/2024	Rs. as at 31/03/2023
Accrued Interest on 8% Govt. of India Savings (Taxable) Bonds-2003 issued by HDFC Bank Ltd.	-	8,72,877
Accrued Interest on FD with ICICI Home Finance Ltd.	-	7,49,700
Accrued Interest on FD with PNB Housing Finance Limited	1,02,44,433	88,12,167
Accrued Interest on FD with Axis Bank Ltd.	34,86,688	21,58,696
Accrued Interest on FD with Kotak Bank Ltd.	39,000	9,99,717
Accrued Interest on FD with Yes Bank Ltd.	86,35,970	5,47,853
Accrued Interest on Saving Bank Account	15,936	2,16,430
Interest Receivable (Torrent)	3,54,165	1,81,791
Total Rs.	2,27,76,192	1,45,39,231

SCHEDULE J - INCOME OUTSTANDING (OTHER INCOME)

PARTICULARS	Rs. as at 31/03/2024	Rs. as at 31/03/2023
Income Receivable	64,52,916	45,48,298
Total Rs.	64,52,916	45,48,298

SCHEDULE K - CASH AND BANK BALANCES

PARTICULARS	Rs. as at 31/03/2024	Rs. as at 31/03/2023
In Current Account with:-		
(a) Kotak Mahindra Bank Ltd. A/c No. 2811694737	54,955	54,355
(b) Union Bank Ltd. A/c No. 491401010020050	18,23,664	51,35,029
(c) State Bank Of India A/c No. 40107781213	9,085	9,734
(d) Axis Bank Ltd. A/c No. 920030040671426 (OD)	5,930	5,930
(Secured by Hypothecation of Axis Bank Ltd. FD A/c No. 919040086622713)		
In Saving Account with:-		
(a) Axis Bank Ltd. A/c No. 917010079267445	3,99,37,734	1,86,65,729
(b) Kotak Mahindra Bank Ltd. A/c No. 2811694751	16,57,201	80,39,380
(c) Union Bank Ltd. A/c No. 491402010007852	4,07,270	6,46,373
(d) Union Bank Ltd. A/c No. 491402010020691	33,81,384	1,06,383
(e) Yes Bank Ltd. A/c No. 000794600001708	1,64,493	83,43,628
(f) Axis Bank Ltd. A/c No. 918010051456734	7,18,927	27,69,898
(g) Kotak Mahindra Bank Ltd. A/c No. 2811694768	36,472	35,221
(h) Axis Bank Ltd. A/c No. 918010049438409	79,90,302	50,80,763
(i) RBL Bank Ltd. A/c No. 300029111983	27,145	26,018
In Fixed Deposit Account with:-		
Axis Bank Ltd.	2,31,29,381	5,31,29,381
In FCRA Account with:-		
(a) Axis Bank Ltd. A/c No. 918010005532608 Vasna, A'bad. (Savings)	7,31,239	5,94,809
(b) State Bank Of India A/c No. 40184169707 New Delhi Main Branch (Current)	2,14,177	2,14,827
(c) Axis Bank Ltd. (FDR)	19,00,000	19,00,000
Cash Balance:-		
Cash on Hand with Accounts Department	7,04,535	9,89,197
Total Rs.	8,28,93,894	10,57,46,655

Note: Current Account No. 40184169707 with State Bank of India, Sansad Marg, New Delhi for transactions of Foreign Contribution under the FCRA, 2010 (as amended) was opened on 19/05/2021.

SCHEDULE L - REPAIRS & MAINTENANCE (FOR PROPERTIES)

PARTICULARS	For the year ended on	
	Rs. as at 31/03/2024	Rs. as at 31/03/2023
Building Repair Expense	12,16,671	34,61,600
Lift Repair Expense	1,08,774	62,314
Plumbing Expense	3,49,957	1,47,792
Total Rs.	16,75,402	36,71,706

SCHEDULE M - LEGAL AND PROFESSIONAL EXPENSES

PARTICULARS	For the year ended on	
	Rs. as at 31/03/2024	Rs. as at 31/03/2023
Internal Audit Fees	5,35,000	5,35,000
Insurance Cashless Consultancy Charges	17,15,350	6,24,300
Legal Expense	2,68,806	83,750
Licence Fees	2,62,050	60,000
Professional Charges Expenses	7,78,529	6,64,100
Total Rs.	35,59,735	19,67,150

SCHEDULE N - OTHER EXPENSES

PARTICULARS	For the year ended on	
	Rs. as at 31/03/2024	Rs. as at 31/03/2023
Bank Charges	2,164	12,105
GST Expense	44,86,476	55,78,251
Registration Fees	2,77,206	1,03,212
Total Rs.	47,65,846	56,93,568

SCHEDULE O - MEDICAL RELIEF

PARTICULARS	For the year ended on	
	Rs. as at 31/03/2024	Rs. as at 31/03/2023
(a) Healthcare Expenses:-		
Ambulance Expenses	3,09,792	2,73,655
Cathlab Stock Consumed	4,27,78,424	4,08,91,392
Diet to Patients	76,89,974	81,26,797
Doctors' Share Charges	13,01,35,459	10,05,89,768
Electricity Consumption (Net of Recovery)	1,51,28,204	1,00,36,880
Implant Expense	82,56,305	69,07,914
Instrument Repair & Servicing Expense	77,49,374	77,58,793
Laboratory Chemical Stock Consumed	1,53,32,191	1,33,09,142
Laboratory Expense	57,71,285	41,16,084
Linen Stock Consumed	24,97,020	7,64,555
Medicines Stock Consumed	8,24,72,048	6,93,37,523
Misc Equipment Expense	25,80,527	43,80,095
Misc Item Stock Consumed	15,14,158	14,07,024
Other Expenses	12,70,863	6,34,641
Professional Charges Expenses	9,72,49,514	6,70,96,059
Repairs & Maintenance Expenses (Other than Properties)	34,67,189	22,74,820
Stationery & Printing Material Stock Consumed	24,40,711	23,15,528
(b) Administrative Expenses:-		
Advertisement Expense	1,22,37,321	12,26,998
General & Administration Expenses	53,85,372	31,91,541
House Keeping Expense	2,28,78,341	1,31,59,722
Security Expense	61,39,454	56,59,199
(c) Personnel Expenses:-		
Contribution to Provident and Other Funds	77,44,325	70,14,901
Gratuity	26,39,791	28,40,486
Salaries	11,65,85,857	11,98,54,003
Staff Welfare Expense	19,79,232	16,68,701
(d) CSR Expenses	46,20,000	1,51,25,000
Total Rs.	60,68,52,731	50,99,61,221

SCHEDULE P - RESEARCH EXPENSES

PARTICULARS	For the year ended on	
	Rs. as at 31/03/2024	Rs. as at 31/03/2023
(a) Research Expenses:-		
Clinical Trial Project Expenses	18,02,915	17,74,378
Electricity Consumption (Net of Recovery)	63,43,351	42,12,139
Instrument Repair & Servicing Expense	37,38,388	33,25,195
Repairs & Maintenance Expenses (Other than Properties)	14,05,028	9,59,421
Stationery & Printing Material Stock Consumed	10,59,116	9,75,037
(b) Administrative Expenses:-		
General & Administration Expenses	13,92,591	10,68,034
House Keeping Expense	98,05,003	56,39,880
Security Expense	26,31,195	24,25,370
(c) Personnel Expenses:-		
Contribution to Provident and Other Funds	1,22,171	1,89,853
Salaries	77,81,785	76,84,871
Staff Welfare Expense	8,40,742	7,13,365
Total Rs.	3,69,22,285	2,89,67,543

SCHEDULE Q - HEALTHCARE & RESEARCH PROJECT INCOME

PARTICULARS	For the year ended on	
	Rs. as at 31/03/2024	Rs. as at 31/03/2023
(A) Healthcare Income		
Fees & Other Charges from Patients	53,16,79,409	44,30,56,716
Sale of Medicines (Net)	14,10,55,036	11,77,32,100
(B) Research Project Income		
Clinical Trial Project Income	23,40,844	38,79,370
Fresh Frozen Plasma Income	98,620	7,27,092
Total Rs.	67,51,73,909	56,53,95,278


SCHEDULE R - INCOME FROM OTHER SOURCES


PARTICULARS	For the year ended on	
	Rs. as at 31/03/2024	Rs. as at 31/03/2023
Interest on Torrent Deposit	1,73,350	64,660
Maintenance Recovery (Axis Bank)	1,17,480	92,608
Other Income	2,94,572	8,92,555
Profit on Sale of Assets	57,212	65,286
Scrap Income	9,03,328	15,08,572
Total Rs.	15,45,942	26,23,681



चिंता ना करता



 Dr Jivraj Mehta Marg, Vasna,
Ahmedabad, Gujarat – 380007

 079 2663 6363

 info@jivrajhealthcare.org

 www.jivrajhealthcare.org

 [jivrajhospital](https://www.facebook.com/jivrajhospital)

 [jivrajmehtahospital](https://www.instagram.com/jivrajmehtahospital)